



Maine Woodturners

Newsletter

September 2016



September's Demo will feature

AL MATHER & LANNY DEAN

Al Mather, our new president, will give a brief talk on the (hoped for) direction of the club for this coming year.

This month's demo will be on the foot of a bowl

A little theory as well as some how-to's.

(Vacuum chucks not included.)

Members - please bring one or two bowls having either a foot that you think works well or one that doesn't.

We will hold a short discussion regarding how well the feet fit the bowls.

6:15 pm: officers and directors will meet, if possible.

SEPTEMBER 21, 2016

All-Purpose Room, Erskine Academy,
309 Windsor Rd., South China, ME 04358
Show & Tell photos at 6:30 Demo @ 7PM

SECRETARY'S REPORT

The June Meeting of Maine Woodturners was held at Erskine Academy in South China, Maine on Saturday the 25th. Thirty eight members and Guests were in attendance.

President Brian Libby opened the meeting at 9:05 AM and immediately introduced today's Demonstrator Dixie Biggs from Florida. In Her younger years she was a bird carver.

Dixie opened her session with a slide show of her carving arts. There were no turnings or lathe involved in her demo. She carves lots of leaves in her turnings.

At 10:15 we broke for a break. Then she continued with demonstrations of carving and texturing with high speed power tools. She introduced us to the Zentangle designs for carving.

We broke for lunch at noon. After lunch she continued to carve leaves and clovers with rotary tools.

Her carvings were passed around so we could see the results.

The demo ended at 3:10 Pm

There are no club meetings for July and August.

Tom Raymond, Sec

REMINDER:

We still need a Vice-President, please consider stepping up and volunteering !

The landmark 1st Segmenting Symposium in November 2008 was a resounding success. From that humble beginning of approximately 100 attendees, segmentedwoodturners.org was born. As an online chapter of the American Association of Woodturners with more than 500 members worldwide, the chapter has become the driving force in segmented woodturning.

Now is your opportunity to be a part of another great event dedicated primarily to segmenting, set among the splendor of the Boston area. Join us for three days for all that's segmenting ...

Registration
Dec 1, 2015
Late registration
Sep 1, 2016

5th segmenting symposium

October 27-30, 2016



who should attend

From novice to accomplished, everyone interested in segmenting is welcome and will benefit.

demonstrators

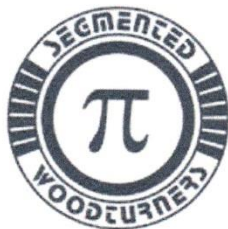
John Beaver, Bob Benke, Jerry Bennett, Bruce Berger, Andy Chen, Robin Costello, Ray Feltz, Tom Lohman, Mike McMillan, Wayne Miller, Al Miotke, Jim Rodgers, Malcolm Tibbetts, Gary Wood

location

Boston Marriott Quincy
1000 Marriott Drive
Quincy, Massachusetts
617-774-2003

HOTEL RESERVATIONS

800-228-9290 or
segmentedwoodturners.org/hotel



Boston 2016

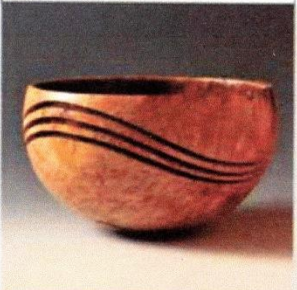
event pricing

\$275 member

\$290 non-member
(includes a 1-yr membership)

rotations

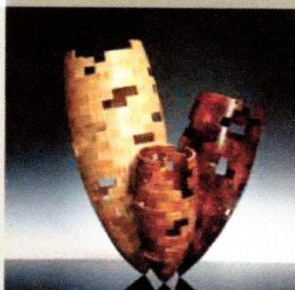
wave bowl, glues, segmented sculpture, open aligned vessels, turning Corian, incorporating minerals, feature rings, open segment gluing station, patterns, eggs, texturing, transitional vessels, checkered hollow form, tools, tubes, tangles, more ...



membership

Join this virtual AAW online chapter for inspiration, the forum, members' photo gallery, tips & tricks, instruction, critiques, and more.

segmentedwoodturners.org



symposium registration

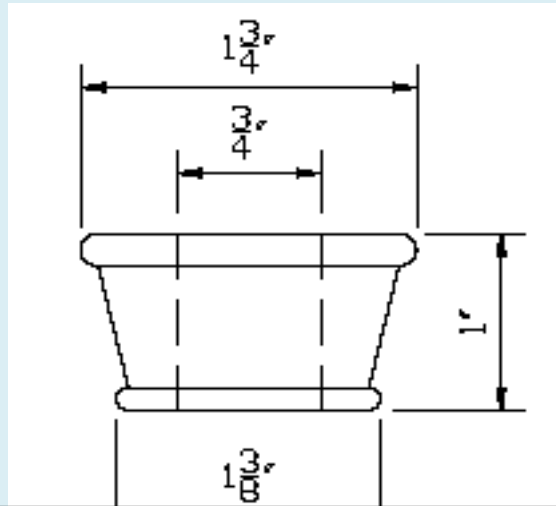
Visit segmentedwoodturners.org/symposium.php.

Registration opens
Dec 1, 2015

Late registration
Sep. 1, 2016 - add \$50

Don't forget about Eagle Cane Adaptors

Eagle cane adaptors are always needed.



A radius at both top and bottom is desired.
This makes for a nicer transition.

