



# Maine Woodturners

## Newsletter



MAY 2015

***Al Mather***

-

**May Demonstrator**



***Turning a biscuit cutter from a log:***

***Al will tell us about the tools he uses and why they work best for him.***

***Lot's of shavings, along with design and how-to issues.***

**He will demonstrate production turning, with plenty of time for questions.**

**Al is great at answering any question you might have. Don't miss this one !!!!**

**Show & Tell photos at 6:30 pm, Demo from 7-9 pm,**

**Erskine Academy, South China**

# Secretary's Report

by Tom Raymond

The April 2015 meeting of Maine Woodturners was held at Erskine Academy in South China, Maine on Wednesday the 15th. Twenty nine members and 3 guests were in attendance.

President Brian Libby opened the meeting at 7 PM announcing that Treasurer Burt Truman is collecting donations for Jorge Castenada who's workshop collapsed due to snow load this past winter. Mac Ray suggested donations at last months meeting. ( a donation from members was sent)

Brian said that Mac Ray won first place award for one of his bowls at the Totally Turning Symposium in Saratoga, NY. This bowl was in the Show and Tell display at last months meeting.

The Portland Press Herald and the Kennebec Journal published a very nice article about Al Mathers cookie cutter turnings last week.

Burt Truman announced that Erskine Academy Student Parker Denico brought in about a dozen small burls located on the for sale table. A donation to the club of a dollar per bowl was suggested.

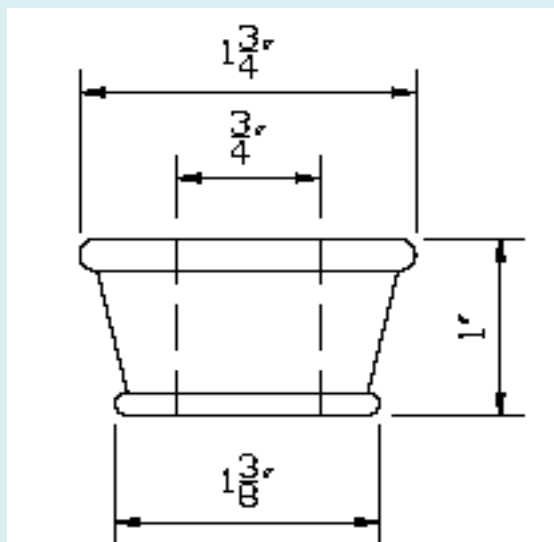
The New England Turning Symposium is coming up on May 9th in Pinkerton, NH. Many famous Turners will be demonstrating.

At 7:07 Pm Brian announced that Damon Harmon is tonight's Demonstrator. Damon started by demonstrating the proper use of turning tools when turning spindles. Then he demonstrated his procedure for turning a small bowl and ended the session with turning an egg. His demo ended at 8:30 pm.

Brian hosted the show and tell table until the meeting ended at 8:42 PM

Tom Raymond, Sec.

Eagle cane adaptors are always needed.



# MARCH SHOW & TELL



Don Caron



Bob MacDougall



Burt Truman



Bob Delio



Al Mather



Lanny Dean



Steve Brooke



Tom Raymond



Leon Lowell





Mac Ray

# APRIL SHOW & TELL



Jeff Frost



Don Rawnsley



Don Caron



Bob MacDougal



John Ramsey



Dick Harvey



Damon Harmon





Tom Raymond



Steve Brooke



John Coppola