

Due to  
winter  
sports  
programs  
we  
CAN NOT  
enter the  
All  
purpose  
room  
until 6:30



## *Newsletter*

*November 2014*

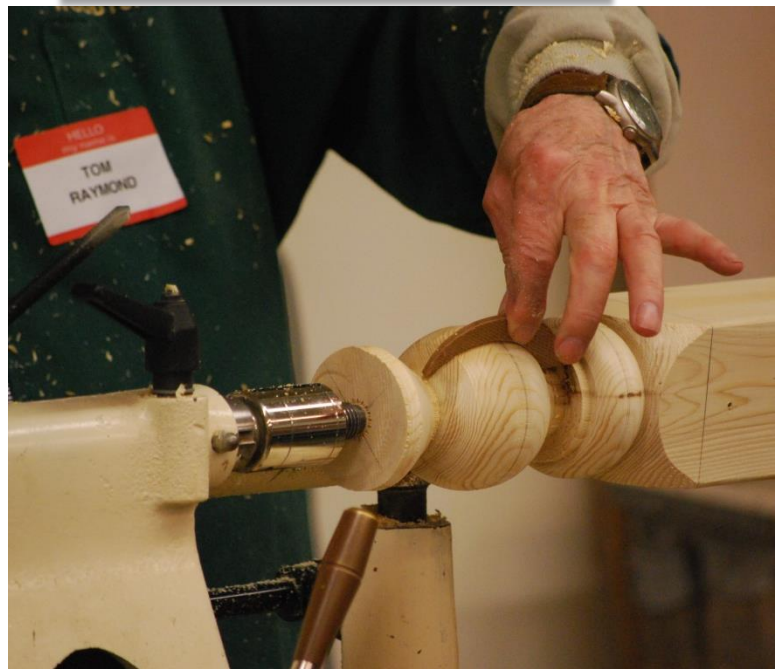
November 19<sup>th</sup> demonstrator will be MWT member

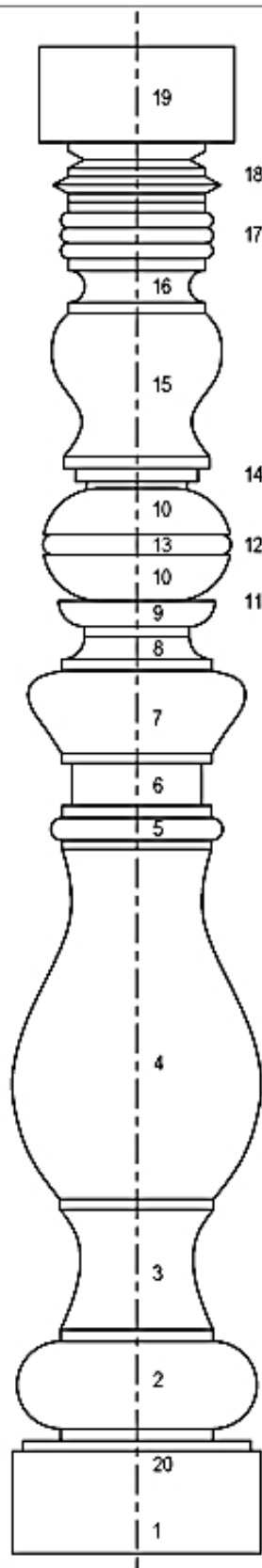
### **TOM RAYMOND**

You may know Tom for his spectacular segmented bowls that he brings to the meeting for show & tell, or his mentoring and tutoring skills from the “Woodturning School” but he is also a skilled spindle turner. Tom will get us back to the basics and then some in this demonstration on spindle turning.



Here are two photos of Tom when he was part of “The Three Amigos” demo, in 2010, turning a mail box post.





## SPINDLE TERMINOLOGY

- |     |           |                                                                        |
|-----|-----------|------------------------------------------------------------------------|
| 1.  | PLINTH    | Large straight sided base                                              |
| 2.  | TORUS     | large semi-circular shape                                              |
| 3.  | SCOTIA    | Sunk in ovoid                                                          |
| 4.  | OGEE      | "S" shape usually asymmetrical (large bulge below is Ogee (cymarecta)  |
| 5.  | ASTRAGAL  | Semi-circular form (smaller than a Torus)                              |
| 6.  | NECK      | Straight section in upper area                                         |
| 7.  | OVOLO     | Protruding segment of an ellipse                                       |
| 8.  | QUARTER   | Hollow (concave)                                                       |
| 9.  | QUARTER   | Round (convex)                                                         |
| 10. | BALL      | Can be elongated into an ellipse                                       |
| 11. | QUIRK     | Transition between elements 9 & 10                                     |
| 12. | FLAT      | end of the quarter round                                               |
| 13. | BEAD      | beads are cut into surface (astragal protrudes above)                  |
| 14. | FILLETS   | 3 stair stepped in reverse                                             |
| 15. | OGEE      | large bulge above (Ogee, cyma-reversa)                                 |
| 16. | CAVETTO   | cove semi-circular hollow                                              |
| 17. | REED      | uniform series of beads, 3 or more.                                    |
| 18. | "V cut"   | straight sided cut - positive or negative.                             |
| 19. | ABACUS    | straight sided section at top                                          |
| 20. | SCAMILLUS | secondary block or plinth, smaller than the plinth & without moulding. |

The source of the original version of this diagram appears to have been a tutorial in the "American Woodturner" Vol. 9 Iss. 4 p. 40.

# OCTOBER SHOW & TELL

---



Large White Cedar Bowl

(Sorry no name tag with photo)







BOB GOGGIN



TOM RAYMOND

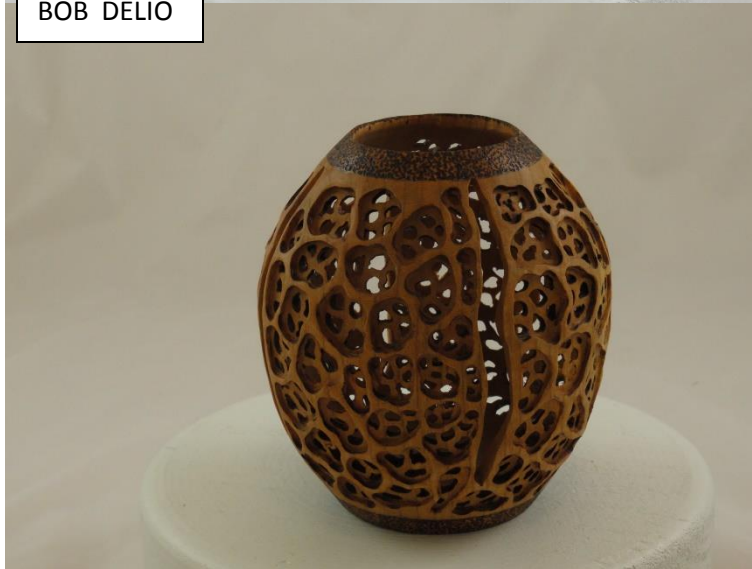


MAC RAY





BOB DELIO







CAM WEAVER



DAMON HARMON





DON RAWNSLEY

*Reminder –Due to Erskine’s winter sports*

We **can not** enter the All purpose room **until 6:30**