



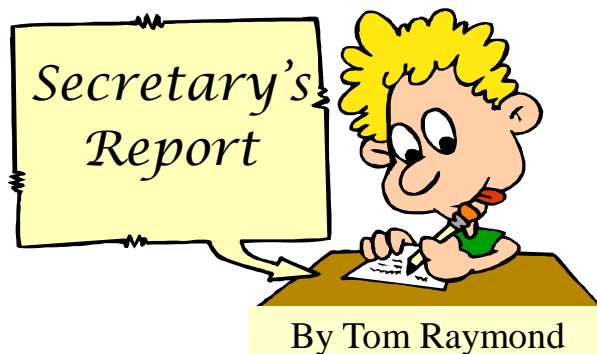
A Maine Chapter of the American Association of Woodturners

DECEMBER 2008



**THE ANNUAL POT LUCK SUPPER AND YANKEE SWAP WILL TAKE PLACE ON
DECEMBER 16, 2008 AT 6:30 PM IN THE ERSKINE ACADEMY CAFETERIA**

PLEASE NOTE THAT THIS IS A TUESDAY NIGHT



The November Maine Woodturners meeting was held at Erskine Academy, South China, Maine on Wednesday the 19th. About 46 members and guests were in attendance.

President Andy Hoyt opened the meeting at 7 PM with several announcements: The new club brochures are available and suggested that members take a dozen or so to hand out to anyone that might be interested in joining the club. Ed Ham in Brunswick has a Delta lathe for sale. For more information see our website. Andy received a box of Myrtle wood from South Coast Woodturners in Oregon. They are trying to promote a wood exchange with our club. He offered the wood to anyone who is interested.

Andy is looking for volunteers to turn tops at the "Let It Snow Gift Fair" at the Camden Snow Bowl on December 5 and 6. All tops will be given to the children there.

Dues are due and Treasurer Burt Truman is collecting. If you belong to AAW, and want your name listed in the 2009 resource directory, dues must be paid by December 31.

A Woodturners club in Cornwall England asked if we would be interested in being their sister club. Andy will get more info on what is involved.

The Christmas party will be on Tuesday, Dec. 16th in the cafeteria at Erskine Academy. It will be a pot luck supper with a Yankee Swap. More info will be sent via e-mail before the event takes place.

New members were introduced to the membership and then Andy introduced David Lancaster, tonight's demonstrator.

The demo started at 7:13 PM and ended at 8:55. There was no show and tell at this meeting.

At the end of the meeting Andy took a group photo of the attendee's.

New MWT Member Profile



Chuck Seguin

Chuck, a self-pronounced “jack of all trades”, has a background as a substitute teacher, fine and rough carpentry, computer science and computer sales, building maintenance and remodeling. His exposure to turning came early, observing his dad create segmented bowls on a 1953 Craftsman 12” capacity lathe- which is now his. Chuck has recently taken basic Intro courses at the Woodturning School in Damariscotta and is very interested in sharing his new knowledge with beginners. He expects to make a contribution to MWT in the area of communications via the website and newsletter. Welcome aboard, Chuck!

Editors Note

As your Editor of the Newsletter, and a fairly new member of the Maine Woodturners, I am asking for help from the membership for ideas. Maybe a short article on a project, an event you went to or maybe a member has traveled to do a demo. *Many contributors lighten the load*

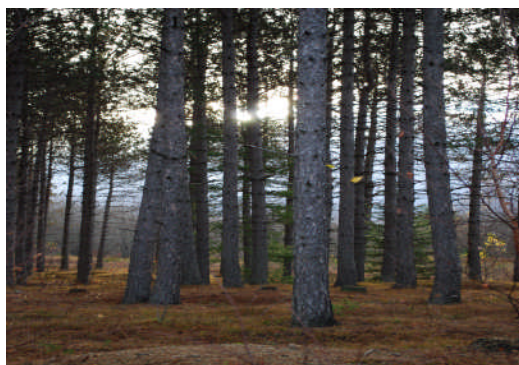
Thanks, Brian

Answers to questions you just never got around to asking!

What are the official State trees for the new England States?

here they are !

Connecticut-----White Oak
Maine-----Eastern White Pine
Massachusetts-----American Elm
New Hampshire-----Paper Birch
Vermont-----Sugar Maple
Rhode Island-----Red Maple



AAW 20TH Anniversary Chapters

The 2008 resource directory of the AAW lists 14 chapters that have had their charters for twenty years. What an achievement!!

This tells us that there are many members in each club who step up and volunteer. Many times it may involve only a few hours a year.

Pikes Peak Woodturners, Colorado
South Florida Woodturners
Chicago Woodturners
Central Indiana chapter
Michigan Association of Woodturners
Northwestern Michigan chapter
Tennessee Association of Woodturners
Tri-State Woodturners Chattanooga
Central Texas Woodturners
Gulf Coast Woodturners, Texas
Woodturners of North Texas
Utah Association of Woodturners
Tidewater Turners of Virginia
Mountaineers Woodturners, West Virginia

Dave Lancaster Demo

November 19, 2008

David Lancaster Demonstration for the Maine Woodturners at Erskine Academy

“Anything, but BOWLS”, was the title suggested by President Andy Hoyt to demonstrator David Lancaster for his demonstration at our November meeting. Somehow that was changed as David announced to the group that he would be doing; “Nothing, but BOWLS” or “Basic Fun 101: Bowls”.



There is enough information in our archived newsletters to flesh out the who, the what, the where, the when and the how David Lancaster arrived in this time and place so he could spend a few moments sharing his humor, ideas and insights to our membership.

He started out in a relaxed conversational manner as if talking to an old friend about something he loves. His down home humor sprinkling his thoughts about like a gardener casting seeds to sow a lawn.

David likes to make nested bowls from Black Ash, a traditional favorite wood of the Native Americans and the early colonial settlers. He rarely wastes any of the wood from the blanks or burls he uses and turns the scrap into spoons and ladles. So, it was a novelty for him to return to Basics 101. Today's project used freshly cut ash from a woodpile and an improvisational use of the different chucks available on site.



He chatted and kidded a few of the elder members of the group as he placed a sample piece of ash on Erskine's Oneway Lathe. Usually he uses a vacuum chuck at the head stock to hold the turning but he was without his vacuum pump and just put the vacuum chuck head in place and used the tailstock center point to apply pressure against the chuck seal.

Starting at a slow speed and using a pulling cut, he roughed out the general form for the outside of the bowl, allowing the shavings to hit the back wall of the shop and to miss the oglers (Andy Hoyt and others) in the front row. He didn't seem concerned if the piece blew up on him and wiped out the first row because, he said, "That's why we have a vice president".

After waxing the tool rest, the finish cut for the exterior of the bowl was a bevel rub cut using the bottom edge of the gouge and twisting up until it cut. When asked about the grain David said, I try to take care of that at the chainsaw." So his placement of the block on the lathe and how the grain works for the bowl is started long before the chucks and gouges touch the wood.



After reversing and rechucking the blank we watched more shavings fly as David applied a bowl gouge with an Irish grind on the center of the bowl and power cut his way to the edge. With half or so turned out he moved to turn the rim. He undercut to start the movement of the bottom of the gouge the back of the gouge as he thinned out the rim. The undercut is to relieve vibrations between the tool and the work during this cut. Measuring the side wall depth several times was second nature as David continued to answer questions about the degree of bevel angle on his gouges ($34\frac{1}{2}^{\circ}$) and what level the tool rest is at ("lower than center") or when is it finished ("When I'm done with it").

Continued on page 5

Dave Lancaster Demo *continued;*

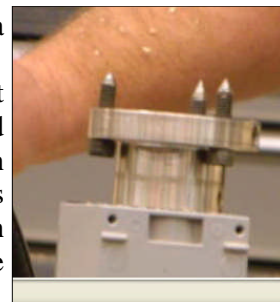
His interior finish cut was one continuous flowing curve from the edge to the center. “Hold and release your breath as you concentrate on the gouge handle in making the one simple arc”, were his final words on the subject of finishing cuts.

He then reversed the bowl to the vacuum chuck and removed the tenon and did a little sanding with a Dewalt drill and a sanding pad. In less than 35 minutes including questions and answers we had a David Lancaster ash bowl to pass around. David gave a small sigh and little smile as if to say “That was fun”.



Project number two was to turn a blank into a Natural Edge bowl.

If you’ve been turning for some time you get ideas from many sources and resources. David became one of these for me when he placed on the headstock a face plate with three 1/4” bolts that had been ground to a point and long enough (1 1/2”) to act as spurs to catch the wood on the bark side of the blank. (see photo)



So, the bark side of the blank is at the headstock and the placement of the tailstock allows you to control the center of the piece and its balance.

Rough out from the tail to the headstock slowly. Wait for the wood to meet the gouge. Slowly in several passes contour the outside edge. Once you have a smooth curved edge then push forward and power cut to the headstock.

Before you make your finish cut on the outside; you may have to adjust the blank to make the two edges equal distance from the tool rest. Then check to make sure it’s not skewed or will have an unbalanced look. You can do this by setting the tool rest closer to one outside wing and then rotate the piece to the next winged edge. Make the adjustment by moving the piece at the tailstock. David made his finish cut, with his 3/8” Irish ground gouge, moving slowly at a higher speed to encounter less friction and therefore have less vibrations.

Asked by a member of the group, “What is the most common error made at this (finishing cut) point?” David answered, “... a mistake in wood-turning is trying to get it too perfect.” So, out came the Dewalt drill and the sanding pad and a little Lancaster magic, the result was a near perfect outer edge.



He reversed the blank and placed it in the Stronghold Chuck. Using a medium speed and slow cuts David first found the bevel of the gouge and then moved to air before twisting and slightly pushing forward to engage the cutting edge of the gouge.

Continued on page 6

Dave Lancaster Demo *continued;*

Sandy Gregor asked about how to keep the bark on the bowl. To which David said, "It's a matter of design. You're making a (he gestured a U shape with high walls) rather than (his hands moved to a lesser platter shaped arc)". Several heads in the group nodded in understanding and confirmation that this was the right answer to Sandy's bark question. With that said and done, he applied his finishing cut and showed a sanding technique of sanding with the grain from the inside to the outside edge.



Project three focused on the use of the spindle roughing gouge.

With about twenty minutes left, David asked for a show of hands as to who had been turning for under three years. About a quarter of the attendee's hands raised and David gave brief but detailed instructions on how to power rough out a blank using a 1" spindle roughing gouge.



Joan Coleman was "volunteered" to help him and the contrast between the two was obvious to all. David played Geppetto to Joan's Pinocchio. She stepped up to the lathe and started to slowly rough out a 14"x 5" ash blank with the gouge. David was not unhappy with the result, but kindly offered two or three or four or five or... suggestions to Joan.

"Roughing out is the rapid removal of material"
"A higher speed is a fast cut"
"A lower speed is a bigger cut"
"Rub the bevel and lift the handle"
"Plant your body and use your body to move through the cut"
"When moving left, cut on the **left** of the gouge"
"When moving to the right, cut on the **right** of the gouge"
After stopping the lathe and thanking Joan for her efforts, David gave her one lasting tip, "Stay focused on the **whole** cut from beginning to end. When you lose focus ...that's how accidents happen."



Enough said from here - have a great woodturning holiday.

Chuck Seguin

DUES ARE PAST DUE !!!!!

Burt will gladly take your money



November meeting Photos



Future Demonstrations

*Schedule
Change*

Annual Potluck Christmas Party
DECEMBER 16, 2008 AT 6:30
POT LUCK SUPPER AND YANKEE SWAP



COFFEE & SODA SUPPLIED

JANUARY 17, 2009 (SATURDAY) 9AM

Johannes Michelsen

World Famous Hats

FEBRUARY 14, 2009 (SATURDAY) 9AM

Ralph Tursini

A Bowl from green log to completion

Please note
Saturday Demonstrations !

MEETINGS ARE HELD AT ERSKINE ACADEMY
309 WINDSOR ROAD (ROUTE 32), SOUTH CHINA, MAINE

Our regular meetings are usually the third Wednesday of each month
(except July and August there are no meetings)

Western Mountain Woodturners

Our friends in the Western Mountains meet the second Wednesday of each month at Dirigo High School in the woodshop, located at 26 Notta Rd, Carthage, ME 04224

Their meetings start at 6PM and end at 9PM.



Tee Shirts & Sweat Shirts

The tee shirts come in four colors: Sport Gray, Cardinal Heather, Honey and Indigo Blue. Each is available in sizes ranging from small to triple extra large. The shirts themselves are from the Gildan Company and qualitatively comparable to the familiar Hanes Beefy Tees.

The price for all shirts regardless of size is \$12 for members and \$15 for nonmembers. This price includes Maine's 5% sales tax, but does not include shipping, add five dollars for shipping and handling, which covers shipping via USPS Priority Mail.

Sweat shirts are now available with the same size range. The colors are almost identical too. We have Sport Grey (same), Honey, (same), Carolina Blue (nearly identical to Indigo Heather), and Cherry Red (which is a bit more vibrant). The price for these sweat shirts is \$24 for members and \$28 for nonmembers.

Please also note - tee shirts will neither be available for inspection nor for sale during chapter meetings. However, if so requested your order will be brought to the next meeting thereby avoiding the need for you to pay the postage and handling charge.

OFFICERS

2008-2009

President

Andy Hoyt
314-7213

aeh@downscaledesigns.com
[also our web guy!]

Vice-President

Ken Shepherd
882-4128
kshep440@verizon.net

Treasurer

Burt Truman
622-6772
trumbu@roadrunner.com

Secretary

Tom Raymond
563-6813
trdamar@tidewater.net

Librarian

Eugene Beaupre
873-3537
pixes@aol.com

Immediate Past President

Peter McCrea
354-2314
panacea35@gmail.com

Directors

Dave Lancaster
445-4758
dave@heirloombowls.com
Sheila Wiken
562-7419
sheilawiken@roadrunner.com
Dennis Curtis
623-1685
curtonpond@roadrunner.com

Newsletter

Brian Libby
615-5901
bampa@roadrunner.com



Totally Turning 2009

The Adirondack Woodturners Association (AWA) brought you Totally Turning 2003 through Totally Turning 2007. Totally Turning 2008, originally scheduled for the October of 2008 in Albany, had to be cancelled. HOWEVER, we will proudly present Totally Turning 2009 on Saturday and Sunday, March 28 and 29, 2009 in Saratoga Springs, New York.

The AWA (Adirondack Woodturners Association) is a Special Interest Group (woodturning) of the Northeastern Woodworkers Association (NWA). The NWA has presented a woodworking show titled SHOWCASE in Saratoga Springs, New York for the past 17 years. SHOWCASE draws about 4000 woodworking attendees. It provides an Instant Gallery of roughly 500 pieces of fine woodworking including woodturning, presents continuous classes on woodworking, offers about 70 woodworking vendors (including many related to woodturning), and displays continuous demonstrations of woodturning, woodcarving, scrollsawing, and lumbering. Door prizes, raffles, and many give-aways make it an exciting two days of woodworking.

On March 28 and 29, 2009, the Adirondack Woodturners Association will present Totally Turning 2009 in the same location as SHOWCASE. Every Totally Turning registrant will have full access to BOTH the woodturning rotations of Totally Turning 2009 and to all of SHOWCASE 2009. Instant Gallery pieces brought by Totally Turning registrants will be a part of the Instant Gallery of Showcase and as such will be viewed by about 4000 of the general public in addition to the woodturners of Totally Turning 2009.

By moving Totally Turning out of the downtown Albany area and in to the Saratoga Springs City Center, the event will have a bigger Instant Gallery, a much larger vendors area, far more total rotations, a host hotel attached to the site, many convenient places to eat, and a spouses program. Spring time in Saratoga Springs is wonderful. The price has remained the same with far more to do and see over the two days. Totally Turning 2009 and Showcase 2009 will be held concurrently at the Saratoga Springs City Center and the adjoining Saratoga Hilton Hotel. Out of the big city of Albany and into the beautiful, small city of Saratoga Springs. It promises to be our best Totally Turning yet!

Peter Case
Chairperson - Totally Turning 2009

(Reprinted with permission)

Sounds like a great event that is not that far to travel to !

Go to WWW.totallyturning.org for more information.

CENTER FOR FURNITURE CRAFTMANSHIP

MESSLER GALLERY

"In The Palm of your Hand : Exquisite Gifts"
curator : Jacques Vessery.

December 5, 2008—February 13, 2009.

The exhibitors are from the U.S., Germany, France, England, Canada, and Australia

Mark Sfirri ~ Norm Sartorius ~ Jacques Vessery ~ J.M. Syron and
Bonnie Bishoff ~ Johannes Michelson ~ Mike Lee ~ Michael Hosaluk
Louise Hibbert ~ Douglas Fisher ~ Janel Jacobson ~ Gorst DuPlessis
~ Doug Funkel ~ Hans Veissflog~ Michael Mocho ~ Binh Pho ~
Terry Martin ~ Michael Cullen ~ Christian Burchard ~ Frazier Smith ~
Norm Santorius ~ Ray Key

*These masters of woodturning are well known not only for their artistry but also
their ability to think outside the box.*

Make time for a trip to Rockport, it will be time well spent

"TAKE TIME TO SMELL THE ROSES "



"In The Palm of your Hand: Exquisite Gifts"

Mark Sfirri



Michael Hosaluk



Jacques Vessery / Mark Sfirri collaboration



This collaboration is called
"It Boils Down To This"

A trip to the Gallery will reveal the full meaning.

Jacques Vessery



Johannes Michelson



Binh Pho



THIS IS A MUST SEE EXHIBIT

A PICTURE IS WORTH A THOUSAND WORDS

Several Maine Woodturners members were at the Let it Snow Gift Fair in Camden on December 5 & 6 turning tops to give to the children that were in attendance.



Stephen Gleasner showed up at the Fair with his family and took a few minutes to chat with Andy Hoyt. Stephen stated that he had never turned a top and just may have to try.

