

A Maine Chapter of the American Association of Woodturners

SEPTEMBER 2008

Damon's distinctive work



Sapele and maple
poly finish



Poplar femisphere
gray paint



Ash hexisphere
poly finish



Mahogany
poly finish

Damon Harmon

September 17th Demonstrator

Turning a Femisphere



Damon started exploring what he could make with wood in the mid 1950's. First, mostly straight and flat, then curved, progressing on to mantels, front entrances, curved windows, and stair parts.

He has been lucky enough to get paid to do this daily for over 52 years, and still finds new things at least weekly. In the 1980's he started doing some architectural turning on an old monster lathe. Driven by a flat belt from an overhead line shaft, it could turn up to 24 inches in diameter and at least 16 feet long. (Damon has been down-sizing ever since! His latest is a Vicmark mini lathe.)

Later in the 1980's with the help of a tool and die maker friend, he built what he calls his "HOMEWAY" Lathe. It is the same size as the large Oneway, but much cheaper, and of course lacks many of the nice features that more money can provide. About this time he bought a video from Del Stubbs, to learn how to turn some bowls. He decided Del Stubbs was really "my kind of guy", and he replayed that tape until he wore it out. After turning over 200 bowls, mostly of green wood, he began exploring small boxes. He discovered *The American Association of Woodturners* just a couple of weeks before the 2002 Symposium in Providence R. I. While exploring some of the AAW websites, he became intrigued by the shape that someone has named the Femisphere. He made one of these shapes, and realized that it could be turned into a box. So he will show you how he does this, and he hopes you will become intrigued enough to give it a try.

Damon enjoys turning Maple, Walnut, Cherry, Elm, Poplar, Mahogany, Sapele, and Apple. He doesn't like to turn Willow, Cumaru, Red Oak, Spanish Cedar, or Redwood.

Presidents Message

Greetings all.

So Mark's column was titled "As the Wood Turns" and Peter's was called "Chips 'n' Stuff" and now here I am finding it quite disturbing that one of my first jobs as your new Gavel Bearer is to come up with some catchy/pithy title for my column. That's almost as disturbing as the fact that I have a column in the first place, and equally as disturbing as the fact that I'm the new Gavel Bearer. This was never a goal of mine, but I'm honored to have been chosen – even though I have proof that the other nominee rigged the election in my favor.

While I work on that column title, let me offer my thanks to Peter McCrea for a fabulous term as our president. The changes he brought to us (like the new format for Show and Tell and the multi-participant demos) were a most positive development. He kept the membership focused and the checkbook in the black. Well done, Pete! On the downside, he's now raised the bar so high that it will be a challenge for me to even come close to his standard.

But I shall try. As I write this during the first week of August, it's pouring rain, actually kinda chilly and the Olympics are set to begin this week. My feet hurt, my back aches, and I have this "thing" on my elbow that itches like mad. I'm just stalling here, folks. Don't mind me.

First topic is easy, and since you're reading this, you already know what it is. We have a newsletter again! My hat's off to Brian Libby for bellying up to the bar and volunteering to take a shot at it. There are various bugs in the publishing process to be worked out and we're not quite certain if this will be a monthly, quarterly, or occasional thing; but both of us are committed to making it happen. However, we cannot do it alone - your help is needed too. We're hoping to find a handful of members who are willing to contribute to this in the form of penning an occasional article. It might be notes from a recent demo; about a strange piece of wood you came across; what you did during the summer hiatus; a photographic tour of your shop; or some such notion.

In order to save money and reduce the workload, the newsletter will only be published digitally. As an issue becomes available, I'll be sending out an email to everyone simply stating that it exists on the website and provide a direct link to it.

Which brings me to another item. Treasurer Burt Truman is the chapter's Keeper of the Membership

List and as such his copy is the only one that matters. So if you've moved, acquired a different email address or need to advise as to a new phone number, he's the guy to advise. His protocol is to then alert me so I can adjust things on the website.

Speaking of Burt, here's your first (of probably many) reminders that your annual dues need to be paid by the November meeting. Nuff said.

Speaking of dues, here's another reminder. Any member who does a solo full-session demo gets a free one-year membership. But wait! There's more! He or she also gets a free club tee shirt.

Speaking of demos. (This segue concept is working, huh?) I'm working now to flesh out the demo schedule for the year. Damon Harmon is set to demonstrate the creation of a Femisphere for the September meeting and Keith Tompkins from Tivoli, NY will be here for the October meeting, which will be a Saturday session. We've also got Johannes Michelsen lined up for January and Ralph Tursini for February. Both of those guys are from Vermont.

Beyond this, the schedule is wide open, except for the December meeting, which will be a Christmas Party affair at Erskine. But this still leaves five months that we'll have to fill with demos from within the membership. Trust that I'll be hitting all of you up to take a stab at it and some of you may have already heard from me by the time you read this. Feel free to preempt that conversation and belly up now. Or just call to discuss it casually.

Speaking of bellying up to the bar. We also need a few folks to help with the formal photographing of the Show and Tell pieces and the general meeting, too. I'd also like to find someone to share duties with Dennis Curtis on the video camera.

There will be a Board of Directors meeting at Erskine on September 8th at 6:30 PM. All members are invited to attend and participate, although should a topic of discussion result in the need for a vote, only board members are permitted to do so.

I just noticed a common phrase in this letter. So the title for my column shall heretofore be known as "Speaking of...."

That's it. I'll see you all soon.

Andy

Special Projects

The Eagle Cane Project



This supports our veterans and is a cooperative effort of the Maine Woodturners and the Maine Woodcarvers. This has been an ongoing effort in several States to carve canes that are eagle-headed, personalized and then presented to wounded post – 9/11 veterans. The Summer issue of *American Woodturner* magazine has a 6 page article on this project. (one more reason to join the AAW)



Burt came to the June meeting and showed three eagle canes that were partially carved. Burt Truman, Peter McCrea, Andy Hoyt and Gary Rowland turned the couplers (the transition collar between the shaft and eagle head) with the wood donated by John McAlevy (Walnut) and the late Hal Kinney of Thomaston (Northan Ash).



Tops for Kids

At our regular monthly meeting on June 18 we devoted our entire meeting to turning tops for the Barbara Bush Childrens Hospital in Portland. Burt Truman secured some donated maple that Peter McCrea turned into cylinders. About 25 members had their choice of three brands of lathes to use, two Erskine Academy Oneways, two Jet minis and three Rikon minis. It was a great time with many members trying out all three name plates!

Several members turned some tops at home, brought them to the meeting and then turned many more. Here is the proof!



Future Demonstrations

September 17, 2008

October 11, 2008 (Saturday) 9AM

November 19, 2008

December 17, 2008

January 17, 2009 (Saturday) 9AM

(maybe the 24th)

February 14, 2009 (Saturday) 9AM

Damon Harmon — turning a femisphere

Keith Tompkins from New York

T B D — got any ideas!!!

Annual Potluck Christmas Party

Johannes Michelsen from Vermont

Ralph Tursini from Vermont

Our meetings are held at Erskine Academy , 309 Windsor Road (route 32), South China, Maine

Monthly Meeting Details

We meet the third Wednesday of each month
(except July and August there are no meetings)

6:30 PM Photography of show and tell items

6:45 PM Coffee and donuts

7:00 PM Short business meeting

7:15 PM Demonstration

8:30 PM Show and Tell table feedback

9:00 PM Head home with more great info in
our memory banks.

Treasurers Report

By Burt Truman

We are solvent and in good financial standing



Membership Statistics

77 paid members

5 family memberships

1 honorary member

3 life members

4 student members.

All but 6 members have email addresses.

Membership year runs November 1 to October 31



Paid-up dues and good meeting attendance assures that we
can have excellent local and nationally known demonstrators!

Good people + good demos + good coffee = great times!!!

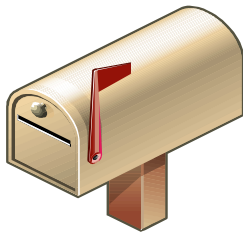
WANTED!

The Club needs YOU!

*There are many jobs that need to be done to make our
club a continued success.
please see Andy Hoyt for details*

Your support is needed !

Can you write a review on any of tapes that are in the our library, a tip that has helped you, or an interesting website you found surfing? Do you know a student that turns and is doing good things, or anything else you would like to share with our membership. All articles should be written in Word. Please email any material to me at bampa@roadrunner.com



Thanks, *Brian*

Club Officers

President

Andy Hoyt

314-7213

aeh@downscaledesigns.com

[also our webguy!]

Vice-President

Ken Shepherd

882-4128

kshep440@verizon.net

Treasurer

Burt Truman

622-6772

trumbu@roadrunner.com

Secretary

Tom Raymond

563-6813

trdamar@tidewater.net

Librarians

Eugene Beaupre

873-3537

pixes@aol.com

Immediate Past President

Peter McCrea

354-2314

panacea35@gmail.com

Directors

Dave Lancaster

445-4758

dave@heirloombowls.com

Sheila Wiken

562-7419

sheilawiken@roadrunner.com

Bob Biette

725-2247

bmbiette2@suscom-maine.com

Newsletter

Brian Libby

615-5901

bampa@roadrunner.com

Peter Asselyn



Peter Asselyn was at the South Portland Rockler Woodworking Store on May 31, 2008. He spent about 2 hours demonstrating bowl turning. "[Problem solving on the lathe](#)" was actually the subject of the demo. There were many interested turners there, including Club members Charlotte Carnes and Brian Libby, that were glued to every detail explained by Peter. To end the demo Peter turned 2 tops from a blank that Charlotte brought. Appropriately, just as Peter was turning the tops a little girl arrived with her dad. Needless to say, she received a top. Peter does an excellent job of explaining why problems occur and how to remedy them.

AAW Star Chapters

The American Association of Woodturners has recently recognized 15 Chapters, all of whose members are also members of the AAW.

Central Florida Woodturners
Central Illinois Woodturners
Cumberland Valley Woodturners(PA)
Gold County Turners (California)
Jersey Cape Woodturners Guild (NJ)
Lincoln Land Woodturners (IL)
Michigan Association of Woodturners
Milwaukee Area Woodturners
North Coast Woodturners(Ohio)
Northwest Michigan Woodturners
Northeast Wisconsin Woodturners
Pacific Northwest Woodturners Guild (OR)
Peace River Woodturners (FI)
San Diego Woodturners
Southern Oregon Woodturners

Membership in the AAW has many benefits. A lot of great information is available for both individuals and Clubs. Go online and visit their website at [WWW. woodturner.org](http://WWW.woodturner.org).

SHOW and TELL

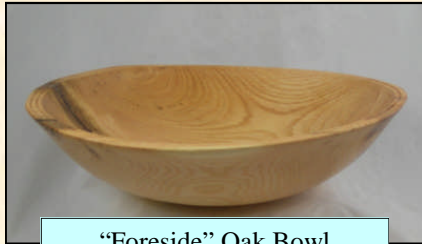
May 2008



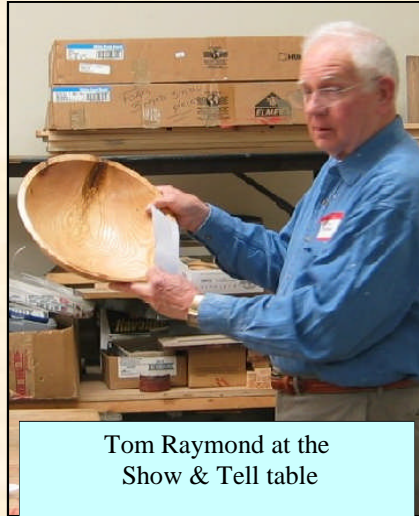
Cedar Apple-Bob Biette



Basswood Vase-Bob Biette



"Foreside" Oak Bowl
Charlotte Carnes



Tom Raymond at the
Show & Tell table



"Wings of Love"-Maple-Peter Asselyn



Walnut Vase-Bob Biette



Maple Bowl— Mark Irving



Box elder bowl-Mark Irving



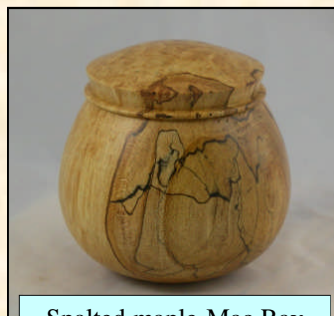
Cherry Box-Bob Biette



Beech bowl-Mark Irving



Alder bowl-Dennis Curtis



Spalted maple-Mac Ray



Cherry pot-Mac Ray



Walnut, maple &
redwood burl
Lou Landry



Cherry burl-Mac Ray



MDF-Lou Landry



Walnut & Mahogany-Lou Landry

Raymond photo by Andy Hoyt all others by Peter McCre

Tee Shirts

It took a little time, but we now have official Maine Woodturners tee shirts !The front of the shirt has our original logo and the back has Jacques Vessery original art work. The four colors and artwork are shown below.



The price is \$12.00 for members and \$15.00 for non-members with the 5% sales tax included in the price.

The easiest way to acquire your shirt will be to send an email to the warehouse manager of our Benton Falls facility at teeshirts@mainewoodturners.org who will happily check inventory, pull your selection, and reserve it in your name until your payment is received. He'll also advise how to make that payment and then await your follow through.

Please note - tee shirts will neither be available for inspection nor for sale during chapter meetings. However, if so requested our couturier will bring a previously purchased shirt to the meeting thereby avoiding the need for you to pay the postage and handling charge.

Wood Dust and Your Health

Working with wood has many health hazards, including dust, toxins and molds.

Inhaling these substances can lead to devastating lung disease.

Minimizing exposure is a must.

REMEMBER THE INVISIBLE DUST IS THE BAD STUFF

American Association of Woodturners

Who we are

An International, non-profit, first organized in 1986, the American Association of Woodturners is the largest organization in the world dedicated to the advancement of woodturning. We are more than 13,000 members, with local chapters throughout the world, a nine member volunteer board of directors, a board of advisors, a full-time administrative staff, conference coordinators and a journal editor.

Our mission is to provide education, information, and organization to those interested in woodturning--a branch of woodworking centered around using the lathe to shape wood. The results range from the familiar to the profound: everything from decorative and functional bowls, boxes, and vessels to furniture and architectural spindles, toys, tools, musical instruments, even sculptural art. Members of the AAW include professionals, amateurs, gallery owners, collectors, and wood and tool suppliers.

{from the AAW website}