

Maineiac Woodturner

Monthly Newsletter of the Maine Chapter of the AAW
Volume 2, Number 5, February, 2003

President's Message

For a below zero night, we had a great turnout and David did a great job with the demo. (We would not have expected anything less).

If not at the meeting, I mentioned that PBS is looking for items to be donated for their annual TV auction. This is a good chance to help Public TV and have your work shown on TV and at a gallery in Portland. To obtain information for donating a piece to the PBS Great TV Auction, call Margie Oxman at 1-800-884-1717 and she will send you the forms. The work needs to be in by the first of March.

The Maine Woodworkers have extended an invitation for us to join them at Hanson Woodturning in Biddeford Feb 12 at 7:30 PM. This is a commercial operation and I understand they have some impressive lathes. Anyone interested can meet at my house at 6:15 and we can carpool. The address is Hanson Woodturning 22 Pearl St., Biddeford, ME. Directions are Route One south to Biddeford and cross two bridges. Go under RR trestle than take first left, than past Merk and take left onto Pearl Street. Brick building on right, use back door and go up to second floor.

The Feb 19th meeting of the Maine Woodturners will be at Poland Spring Metal Spinning at 7:00PM. Michael Angelone has extended a warm welcome to us. I am sure it will be a great evening to see someone spin

In this Issue

President's Message	Page 1 & 2
Editor's Column	Page 2
Classifieds	Page 5
Round Top Information	Page 7
Club Business	Page 2
Bring Back Raffle	Page 3
Meeting Schedule	Page 5
Wood Auction	Page 5
Club Officers	Page 1
Show and Tell	Pages 8—10
David Lancaster Demo	Pages 3—4
Member News	Pages 2
Board of Directors Meeting	Page 6

Club Officers

President	Peter Asselyn 353-4206 peterasselyn@gwi.net	Librarian	Jeff Raymond jeffraymond@prontomail.com
Vice-Pres.	Mark Irving 443-2337 irvings@javanet.com	Treasurer	Robert Morrell 725-2212 morrellb@downeastenergy.com
Newsletter	Kieran Kammerer 622-1946 kirkamm@adelphia.net	Secretary	Tom Raymond 563-6813 trdamar@tidewater.net
	Burt Truman 622-6772 trumbu@mint.net		

copper and pewter. The address is 168 Range Hill Rd., Poland Spring. Directions from Gray are Take 26 out of Gray and it is the second left after Shaker Village. Go about one mile on Range Hill Rd from Rt. 26. Sign will be in front of house. Anyone wanting to car pool is welcome to meet at my house at 6:00 PM that evening. Please contact me if you need directions to my house in Pownal.

Happy turning and stay warm.

Peter

Club Business, January, 2003

The January meeting of Maine Woodturners was held at Erskine Academy on Wednesday 1-15-03. President Peter Asselyn opened the meeting at 7 PM. Thirty-two members and guests were present.

Old Business: none

New Business: none

Peter mentioned that the Channel 10 auction on Maine PBS is looking for Artists to display their work and donate to the auction. It is good exposure for the Club and the Artist. Michael Angelo will be the demonstrator at the February meeting. It could be held at his house near Gray. The location will be announced in the newsletter.

Ken Keoughan said that Round Top Center for the Arts in Damariscotta is planning to set up a wood turning training program. He and Jacques Vesery have been involved. The details are in the newsletter.

David Lancaster demonstrated sharpening a chain saw and woodturning chisels until 8:30. The session was very informative.

Peter Asselyn was the Auctioneer for the Wood Auction, which netted \$21.

A vernier caliper was the item for the bring back Raffle which netted \$20.

Show and Tell was last then the meeting ended at 9:05.

Member News

If anybody else subscribes to Woodturning Magazine, they were probably as surprised and pleased as I was to see Stephen Gleasner's work featured on the lead page of an article covering the Instant Gallery at the AAW Rhode Island Symposium. Not only did I know the turner personally, I had even handled and probably almost dropped the featured piece.

As many long term members know and the new members will readily glean from the monthly meetings, we are quite fortunate to have in our midst, an incredible wealth of talented and quite generous member turners. I know I speak for all the other members in thanking everyone for their help and expertise.

Kieran

Editor's Column

From what I have heard and seen at the last several meetings, the club continues to grow at a steady pace. Although some new members have only been turning a short time, most seem to have a real knack for turning and have quickly developed a nice eye for design, shape and proportion. Keep up the excellent work.

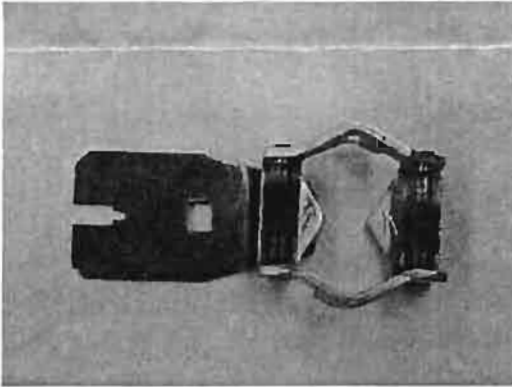
This is my semi-monthly plea for continued help with the newsletter. Although I continue to enjoy doing it, the time spent on the newsletter is time away from my family and from my own shop/lathe. If anybody is willing to contribute/help, I am only an email or phone call away. Thanks again to those who help on a monthly basis (Mac, Peter, Tom Raymond, etc.).

Kieran

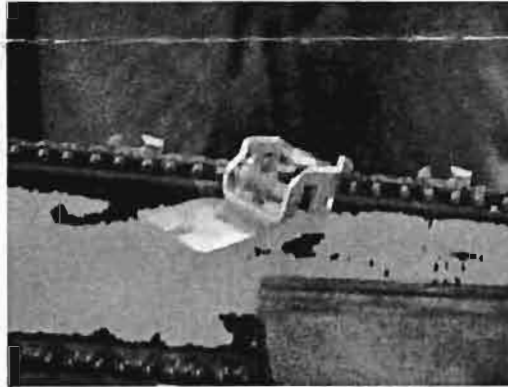
David Lancaster Demonstration, January, 2003

As previously mentioned in the newsletter, January's meeting featured a sharpening demonstration by our own David Lancaster. David is an excellent teacher who is quite willing to share his extensive knowledge of woodturning and the many things he has learned throughout his periods of trial and error. As you speak with David, you soon learn he has the mind of a mechanical engineer and is always looking for ways to make the experience of woodturning more enjoyable. Due to his extensive knowledge, I personally view him as the "Click or Clack" of woodturning. Someday I truly expect him to close one of his demos with "Don't turn like my brother."

The demo began with a discussion of chain saw sharpening. David emphasized the importance of always having your chainsaw held firmly before beginning to sharpen the chain. David will go so far as to bring a vice out into the field with him. This will be clamped to a stump or his truck, the chainsaw is then held tight in the vice. The chain is then sharpened with a sharpening gauge and file. The gauge will help to keep the depth of the cut on each tooth the same, however, you still need to watch the angle of the file closely. The teeth that all are facing one way are filed first, the teeth facing the opposite direction are then filed. Using the gauge and a flat file, David then files the rakers down to the appropriate height.



Chain Saw Sharpening Guide



Guide in Place on Blade

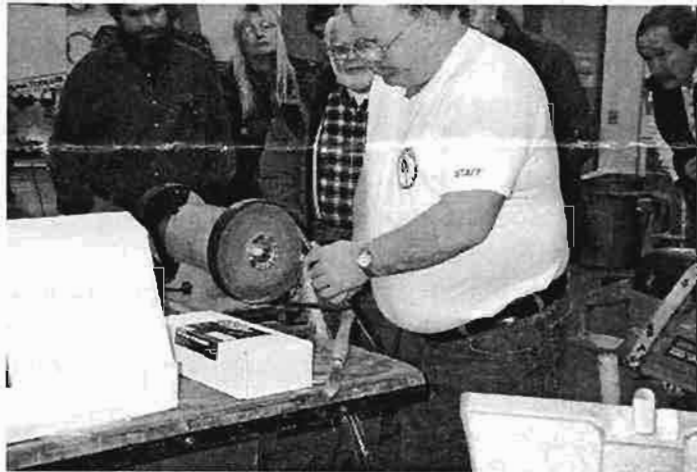
The rest of the demonstration focused on sharpening turning tools and woodworking chisels. David prefers to use a high speed 3450 RPM grinder with 54 & 80 grit blue wheels. He is a strong advocate of using a sharpening system to help replicate the angles on each successive sharpening. The system David prefers is sold through Oneway Manufacturing. David would be happy to speak to anyone regarding the Oneway system and can serve as your local Oneway supplier.

Thanks again David for a most informative and enjoyable session. Thanks also to Donna for the doughnuts!!!!



David emphasizing need to have chain-saw firmly clamped prior to trying to sharpen the blade.

David showing how to initially grind the rough profile on a bowl gouge. The gouge will then be placed in the sharpening jig to obtain the final profile on the gouge.



Oneway jig being used to obtain final profile on bowl gauge. Through use of the jig, the same profile can be obtained time after time. The result is a sharp tool with a consistent profile and minimal tool steel removed.

Meeting Schedule

- **February 19th, 2003**

Metal spinning demonstration by Michael Angelone of Poland Spring Metal Spinning. **Remember, demo not held at Erskine but held in Poland, ME.**

- **March 19th, 2003**

Demonstration of segmented turning techniques by Tom Raymond.

- **April 16th, 2003**

Bowl turning demo by David Lancaster.

- **May 21st, 2003**

Mac Ray demonstration (not of himself but of some of his works and turning techniques).



All of us obviously seek our inspiration from different sources. Where do you get yours from?

Wood Auction

Please save any and all wood for the future wood auctions. We will not be having a wood auction in February. Next wood auction will be held at the March meeting.

Classified Ads

Turning Classes: Offering one on one turning instruction in my own shop located in Durham. Fully insured. I provide use of Oneway lathe and all turning tools/wood. For more info/rates/availability, please contact Peter Asselyn at 353-4206.

For Sale: Bowl lathe built by David Lancaster. 28" diameter capacity. 3hp motor with variable speed, bored for vacuum chuck. Vic Marc chuck, face plates and other accessories included. \$2800.. Please contact Ray Carbone. 546-2170.

Turning Classes: David Lancaster is thinking of doing some turning lessons in his shop in Weeks Mills. Those interested, please contact David at 445-4758 for prices, availability, etc.

For Sale: 1&1/2 HP variable speed Baldor, DC motor. Value approx \$600. Asking \$250. Call David Lancaster 445-4758 for more info.

For Sale: Small fans for use in home made kilns. \$9.50 per fan. Please contact Gary Swinton at the next meeting.

MINUTES OF THE MAINE WOODTURNERS BOARD OF DIRECTORS MEETING

The Maine Woodturners board of Directors met at Mark Irving's home in Bath on Wed. 1-22-03. Peter called the meeting to order at 7:04 PM, with the following members in attendance: Mark Irving, Mack Ray, Peter Asselyn, Burt Truman, Ken Keoughan, Tom Raymond and Bob Hackett.

A tool-making meeting was scheduled for June 14 at Erskine Academy. Bob Hackett and Burt Truman will be the Demonstrators. Burt will order tool steel from MSC for that meeting. Bob Hackett volunteered to supply some of the other necessities.

A lengthy discussion on who to get for a nationally known demonstrator and the fact that we may be late in our search for a person was next. Ken Keoughan volunteered to make the search and a list of names such as Elvie Jackson, Peter Block, Stoney Lamar, Stuart Batey, Bruce Hoover, Nick Cook, Stewart Mortimer, Steve Sinner, and Chris Stott was developed. A demonstrator should be scheduled for 2004 at the same time. A limit was set at \$1500 for a two-day session for this demonstrator. Ken suggested that we should have 2 demonstrators a year if the club can afford it.

The Bring Back Raffle was discussed since it's a problem when a guest wins and never returns. A solution to the problem was not resolved.

David Lancaster will be the Demonstrator for April.

Someone mentioned having Rene Pomerleau demonstrate his skills at carving and Mack Ray agreed to be the co-demonstrator.

The final item of discussion by Peter was on a donation to Round Top for their planned turning center. Ken said it's still too early for that at this time.

Someone suggested a meeting on the different methods of chucking.

The meeting ended at 8:30 PM



Ken Keoughan discussing with the membership the plans for Round Top Center for the Arts to establish a Turning Center which will be equipped with several lathes and possibly have club members serve as future demonstrators/instructors. Ken may be seeking donations from club members. More info at future meetings.

Vesery And Keoughan Working With Round Top to Develop Turning Facility

Round Top Center for the Arts executive director, Genetta Mclean, has encouraged Jacques Vesery and Ken Keoughan of the Maine Woodturners to develop and propose a woodturning teaching curriculum for Round Top. Vesery is internationally known and accepted as a wood artist. Keoughan is a contributing editor of *American Woodturner*, the quarterly magazine of the American Association of Woodturners.

At this juncture, Round Top has identified a 1600-square foot classroom area and is preparing a recommendation to their Board of Directors for \$25,000 worth of improvements, modifications and upgrades of this area to make it suitable to the needs of the woodturning curriculum. This projected expenditure includes only the facility, not the contents of that facility.

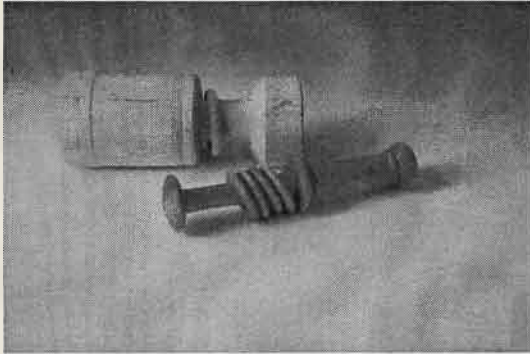
Round Top Center for the Arts is a 501-C3 non-profit arts organization in mid-coast Maine that is now, after the 15 years since its inception, maturing as a non-profit arts education oriented enterprise. Round Top has annually hosted an exemplary craft show, encouraged arts and crafts through a very intense schedule of exhibitions and offers 120 classes/year teaching arts and crafts to a student attendance of 850-1000 participants. While many of these participants are adults, current plans call for added encouragement of teens and children to participate.

Our task, is to develop the \$10,000 that we estimate will be needed to equip the woodturning facility, according to Ken Keoughan. At the recent board meeting of the Maine Woodturners, he suggested that it is premature for the club to make a donation to this fund. I was very much encouraged by the open-minded reception I received at the January club meeting and even more enthused over the kind offer of financial support put forward by the Board of Directors, he said. When we are a little further along, I would like to be able to come to the club with a specific recommendation.

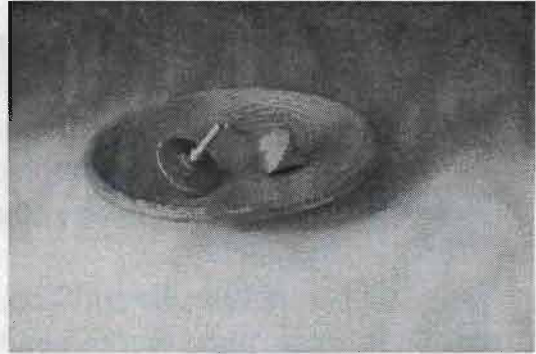
woodworkers warehouse
 Serious Tools For Serious Woodworkers™

Peter wanted to let all the club members know he will giving a woodturning demonstration at the Topsham WWW at 2:00 P.M. All are invited. Peter is also looking for box elder, please call him if you can part with a piece. Thanks!

Show And Tell, January, 2003



Sandy Gregor, Child's Rattle



Sandy Gregor, Cherry Plate and
Tops



Burl Platter, Mike Treadwell



Green Turned Ash Bowl,
Sandy Gregor

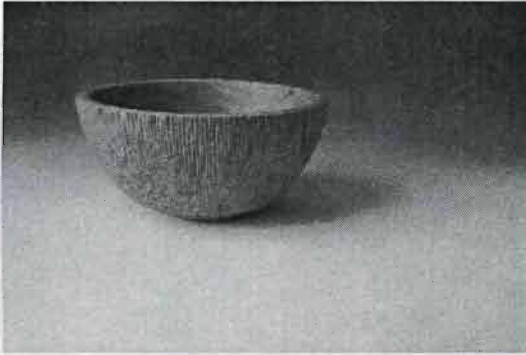


Spalted Yellow Birch Bowl,
Sandy Gregor



Cherry Bowl with Texturing,
Mac Ray

Show And Tell, January 2003, Continued



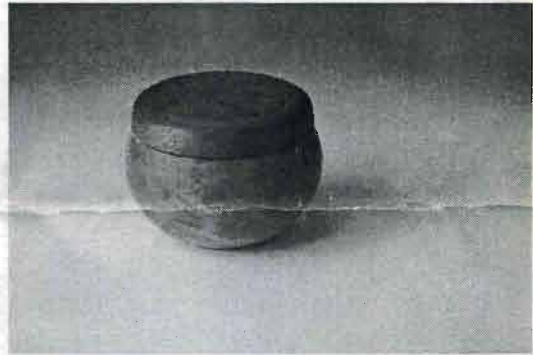
Cherry Bowl with Hand Texturing,
Mac Ray



Box Elder Burl Vase,
Peter McCrea



Segmented Vessel, Tom Raymond



Cherry Burl Box with Paduk Top,
Peter McCrea

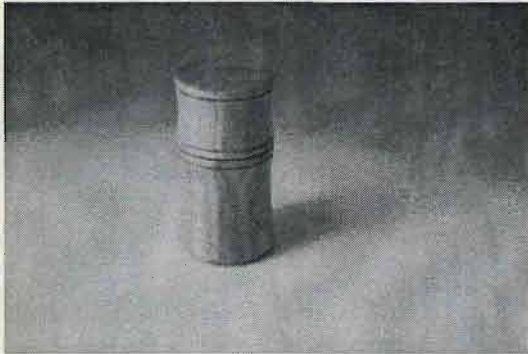


Spruce Burl Bowl,
Peter McCrea

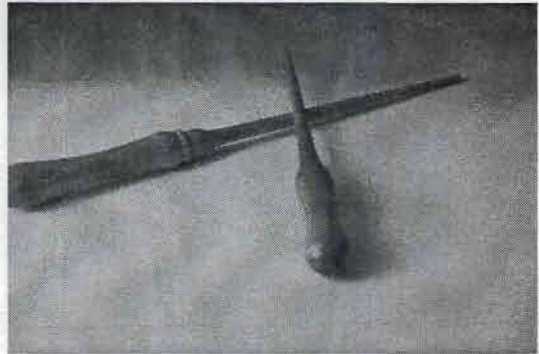


Cherry Box, Mark Irving

Show And Tell, January 2003, Continued



Pear Box, Mark Irving



Magical Wands, Jeff Raymond



Beautiful Piece, Artist Unknown



Cherry Burl Bowl, Peter McCrea



Cherry Burl Bowl, Peter McCrea



Maple Bowl, M. Irving
Child's Rattle, Sandy Gregor