

Maineiac Woodturner

Monthly Newsletter of the Maine Chapter of the AAW
Volume 2, Number 2, October 2002

President's Message

Our many thanks to Bob Rosand for a great weekend of turning. It was a great pleasure to meet Bob and in a very short time, I think everyone considered him a friend. I hope to see him again soon. Bob made many beautiful items while here and was kind enough to donate them to us so we will be raffling them off with the bring back raffle items during the coming months.

Also our thanks to Jacques Vesery who was responsible for making connections with Bob. Jacques also put Bob up for the weekend.

Many people working together make a group like this work. Dave Barden who always opens the shop and gets the coffee ready. All our past and present board members and officers, and also all our members who always seem ready to help with any project.

Mark Irving will be doing the demo next month and I think he is all fired up for it and don't forget there will be a wood auction next month.

November will feature Christian Backsvort author of the Shaker Legacy. He will give a talk and slide presentation.

If anyone has any interest in doing a piece for next years symposium please let me know. I would like to see a Maine chess set with little lobsters as the pawns. Something to think about.

Peter

In this Issue

| | |
|---------------------|--------------|
| President's Message | Page 1 |
| Editor's Column | Page 2 |
| Classifieds | Page 4 |
| Turning Tips | Page 2 |
| Treasurer's Report | Page 3 |
| Club Business | Page 3 |
| Bring Back Raffle | Page 3 |
| Meeting Schedule | Page 4 |
| Wood Auction | Page 4 |
| Club Officers | Page 1 |
| Show and Tell | Pages 9 & 10 |
| Bob Rosand Demo | Pages 5 - 8 |

Club Officers

President Peter Asselyn
353-4206
peterasselyn@awi.net

Vice-Pres. Mark Irving
443-2337
irvings@javanet.com

Newsletter Kieran Kammerer
622-1946
ktkamm@adelphia.net

Burt Truman
622-6772
trumbu@mint.net

Librarian Jeff Raymond
jeffraymond@prontomail.com

Treasure Robert Morrell
725-2212
morrellb@downeastenergy.com

Secretary Tom Raymond
563-6813
trdamar@tidewater.net

Editor's Column

Thanks to all of the club members who have been helping me in putting together this year's newsletters. A special thanks to Tom for his articles, Burt for help with the labels and Mac for his help with the photography. Without everyone's ongoing help and assistance, the newsletter would not be possible.

I would also like to thank Bob Hackett for rising to the call and for helping with the light box. Bob brought in a device he made that consisted of three incandescent bulbs, positioned on a frame behind frosted Plexiglas. This should help to improve the quality of our show and tell photos. We still need other members to step up to the plate and help!!!

As you will see, this newsletter features an ad promoting the Woodworker's Warehouse in Augusta. In exchange for this ad, I was able to get the manager to agree to donate an item each month to our meeting raffle. Please mention the ad if you visit the Augusta WWW. The manager is also willing to give the club cabinet space to display our pieces. He would also like to sponsor a turning demo at the Augusta store. Please contact me if interested. Manager's name in Augusta is Clayton Matthews.

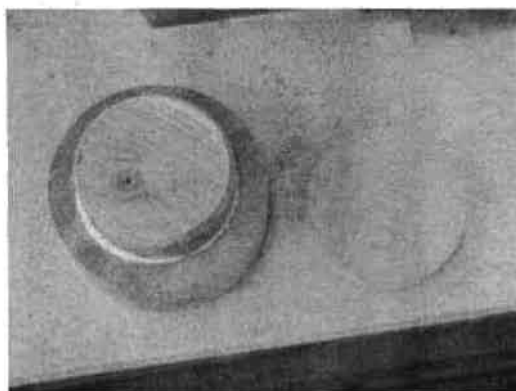
Do you like animals? I was thinking a good way for getting our club advertised would be to donate a turned urn to be sold or raffled at the local Humane Society. Profits to the Humane Society. Let me know.

Kieran

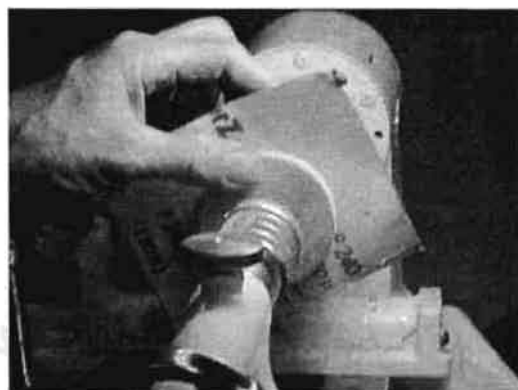
Turning Tip

This month's turning tips comes from Bob Rosand. Like all of us, Bob uses sandpaper to finish his pieces. Prior to making his final cuts and also prior to sanding, Bob will coat his pieces with a 50:50 mixture of turpentine and sanding sealer. Over his many years of turning, Bob has found that this step really improves the quality of his final cut and the overall final appearance of his pieces. Having seen Bob's finished products, I can attest to the validity of this statement.

The second tip provided by Bob was a way to get an inexpensive source of sanding discs. Instead of buying Velcro backed sanding discs, Bob makes his own by cutting the discs, several at a time, from a sheet of sandpaper. Instead of punching them out, Bob uses his skew chisel and a lathe based jig to cut the discs (see photo below). The discs are then attached to the foam backed pad using 3M Repositionable # 75. This allows the discs to be removed after use. Bob figures the discs cost about 3 cents apiece and this allows him to use a new sandpaper disc with each turning.



Two piece jig to cut sandpaper discs. Piece on left held by tenon in Oneway chuck. Piece on right held against several layers of sandpaper by tailstock.



Sandpaper in place. Next step is to turn lathe on and the cut discs out by cutting around wooden circle with point of skew chisel. Mark grade of sandpaper on newly cut discs.

Club Business, September 2002

The meeting of the Maine Woodturners was held at Erskine Academy in South China, Maine. President Peter Asselyn called the meeting to order at 9:10 AM. Twenty five members and guests were present. He first thanked Jacques Vesery for being instrumental in enlisting our weekend demonstrator Bob Rosand. Introduction of Board members and officers were next.

New Business: Bob Morrill collected dues of \$30 per member and a fee of \$30 for the two day demonstration by Bob Rosand. Burt Truman passed out some new member lists and handled the ordering of lunches from Subway before leaving early. Ken Keoghan handled the lunch pickup. The bring back raffle was instituted again and it was won by the writer. The price of coffee and a doughnut at meetings is \$1.

Old Business: Kieran Kammerer has revived the hard copy newsletter and said the printing and mailing charges are about \$1 per copy and he had 60 copies printed from a CD he supplied to the printer. The easiest inputs to the newsletter are by E mail. He encourages input by the members. He said Woodworkers Warehouse in Augusta is willing to work with the club to advertise and display some of our work in their store.

Bob Hackett brought in a light box to photograph the "Show and Tell" pieces for the newsletter. This work was done by Mack Ray, Jacques Vesery and Bob.

Ken Keoghan brought in a super hollow form made of spalted maple which will be displayed along with some of Steve Gleasner's work in an upcoming show. He used a laser guided bar to control the wall of this vessel. The finish was not complete but was of water-base polyurethane. Ken recommended that we look into having Bruce Hooper for a future demonstrator because he was so impressed by his work at the recent AAW Symposium in Providence.

The business meeting ended at 10:45 AM

Tom Raymond, Sec.

Treasurer's Report

Bob Morrell continues to encourage all members to please send him their dues as soon as possible. Bob will be providing club members a run down on the expenses incurred from the recent demonstration by Bob Rosand. Club members will once again have to provide feedback regarding guest demonstrators and the value of these demonstrators in relation to their expenses. In other words, do we want to continue to have outside demonstrators come and do weekend demos. As one of the attendees, I can say that from an individual standpoint, for thirty dollars, you can't beat the information and instruction.

Kieran

Bring Back Raffle

Tom Raymond is once again on the hook for this month's bring back raffle. We should also be raffling of something donated by the Augusta WWW store and possibly one of the pieces turned by Bob Rosand. Bring money and lots of it. All donations benefit future club activities.

Meeting Schedule

• October 16th, 2002

Mark Irving will demonstrate bowl turning at its finest. Please bring your questions for the club's newly elected V.P.

• November 20, 2002

Christian Becksvoort will be demonstrating. Any reader of Fine Woodworker will readily recognize Christian's name. He is one of Maine's premier woodworkers and an accomplished author (Shaker Legacy along with numerous articles). Once again, this will be one meeting no one will want to miss.

• December 18th, 2002

The club's traditional Yankee swap and potluck summer. For some of our members, one of the club's most profitable meetings. Everyone guaranteed to leave with a prize (some much nicer than others).

There are still numerous meeting openings for the 2003 woodturning year. Please talk to Peter if you would like to share your talents and/or workshop with the other club members.



Our club founder showing our current president what a real, hand turned bowl should look and feel like.

Classified Ads

For Sale: Monitor MPI 422 heater, runs on K1 fuel and has a fuel cell - no need for a large tank. Runs very well - will heat you out of most shops. Being offered to MWTAs members first - will go fast. **\$ 500 firm.** More info. call Jacques Vesery 563-8965.

Turning Classes: Offering one on one turning instruction in my own shop located in Durham. Fully insured. I provide use of Oneway lathe and all turning tools/wood. For more info/rates/availability, please contact Peter Asselyn at 353-4206.

Wood Auction

Please bring any and all wood for the October meeting. Peter will once again hopefully serve as this year's wood auctioneer. You won't find quality wood like this at any better price !!!

Club Member News

Stephen Gleasner's and Jacques Vesery's works were recently featured in a show at the Center for Maine Contemporary Art in Rockport. Stephen will also be featured at the Philadelphia Museum of Art's craft show in early November.

Bob Rosand Demo, September 21st and 22nd, 2002

Maine Woodturners hosted Bob Rosand of Bloomsburg, PA as a Demonstrator on Sept. 21 and 22, 2002. Bob arrived in a van full of equipment including his own One Way model 1018 lathe and a vacuum system. Several boxes contained some of his crafted articles for anyone that cared to purchase them.

Twenty five members were in the class on Sat. and 12 on Sunday.

His work consists mostly of small items like Christmas tree ornaments and jewelry. He is not a bowl turner and he has found a niche in the market that sells very well. He also makes his own skew chisels and angled tools. Once you have seen how he uses them, it behooves you to buy some.

After watching him work the first day, I then read his handout and found that it described "how to" make any of his products. Therefore I will try only to point out some of his methods that I observed instead.

His ornaments sell for \$30 and the hand painted ones for \$65. He uses a thick super glue to hold his parts together. Most of his cutting is done with a hefty spindle gouge, a skew chisel, a thin cutoff tool and a small bowl gouge (he grinds both bowl and spindle gouges using same bevel angle). His lathe turns at about 1800 RPM for most of his work and he sands at about half that speed. He has made about 5000 ornaments. He religiously uses the Wolverine gouge sharpening jig on an 80 grit wheel at 1725 RPM. He only hones on the final cut. He paints on sanding sealer cut 50 -50 with turpentine before the final cut. He then sands with 120 grit to 400.

He demonstrated a rectangular calliper that was simple and unique. A fan is used in his shop near the tailstock to blow the dust away from his face. He does not like the Demo lathe control console as it is now located to the bottom right of the stand. He prefers to the right at the top.

The first demo was making a tree ornament with a hanging icicle. It was a treat to watch him work the skew making the thin sections. Once they are finished he hangs a batch and sprays them with satin Deft. The high quality ones are hand painted by his wife.

The next demo was making a small angled turning tool. First he made a handle like the Sorby handle out of ash 1.5" dia. and 10" long. The ferrule was copper tubing. The decorating grooves were made with the long point of the skew down. He used friction polish for the finish. He drilled a 1/4" hole for the tool steel rod. He then showed how to sharpen this tool on a 36 grit wheel.

The next demo was an oil lamp which sells for about \$25 He used myrtle wood for this turning. A 1.5" forstner bit was used to drill the opening for the bottle. Bob waxes his tool rest and I tried it later at home and its well worth doing. He made fine lines on the rim with a small 3/16" gouge ground to a point. A jam chuck was made from pine turned to the ID of the well hole so that he could turn the bottom slightly dished.

The next demo was turning a lidded box of maple burl. The handle was made of a tree twig painted to look like oxidized copper. The outside was textured before hollowing. He uses a compass to lay out equally spaced pencil lines before making the concave cuts with a small spindle gouge. He honed the gouge before the finishing cut. He mentioned that consistent wall thickness is more important than super thin. To hold his sandpaper to the power sanding disc, he uses 3M #75 spray. You have to remove the paper right after sanding. A neat way of making sanding discs fast in the lathe was demonstrated using a jam chuck and a skew chisel.

The next demo was a candle stick made of ash. It was made to use small candles of 1/2" diameter. It was a modern design with a thin neck one third of the way down. The top was 2" in Dia. and the bottom 2.5" with a very thin mid-section of about 3/8" dia. The first trial he struck a nail in the wood. The second a catch of the chisel broke the piece in the thin section. He adds steel or lead shot in the bottom to give it stability. The bottom is sealed with epoxy and a felt pad is glued over it.

Bob mentioned that he is donating all that he is turning to the club for raffle items.

Sunday 9-22-02 Bob said he tried making full size birdhouses and selling them at \$600 each and was not successful.

Bob Rosand Demo, September 21st and 22nd, 2002, (continued)

Bob's next demo was an acorn style ornament which is very attractive and sells for \$20. It takes him about an hour to make one. He recommends drilling the hole for the bird and the perch while the stock is square before going into the lathe. He demonstrated a wheeled tool to texture the surface of the roof. He is very good at making miniature finials. He used a vacuum system to hold some parts during this demo.

The next demo is making a wood paper weight for executives. He wonders why anyone would buy it but they sell. He showed us how he sharpens his Forstner bits. He held the weight body against the headstock with the tailstock before starting the vacuum pump.

The next demo was using Entectsil-1630XFC 1/16" silver solder rod at \$100 a pound with an acetylene torch to fasten the tool steel 3/16" bits to 1/4" steel rod (keystock material) at an angle. He heats to cherry red and simply flows the silver in the gap. Next we learned how to shape and sharpen this tool.

The next demo was birdhouse earrings. (there is a pendant also). This was fascinating because he was working with very small parts. The birdhouse was smaller than a real life acorn. The perch was about .015" in dia. I must mention that he uses an old machinist dial caliper for his measurements with the dial removed in place of a small standard caliper.

The next demo was a ring holder which looks like a perfume bottle with a black flame and it sells for \$22. He used walnut for the bottle and ebony for the flame. He demonstrated two types of texturing with coves and V's.

The next demo was an acorn birdhouse ornament. The OD was 1.25". The class asked for a repeat of this demo and a repeat of cutting the icicle. This concluded the presentation at 3:15 Pm.

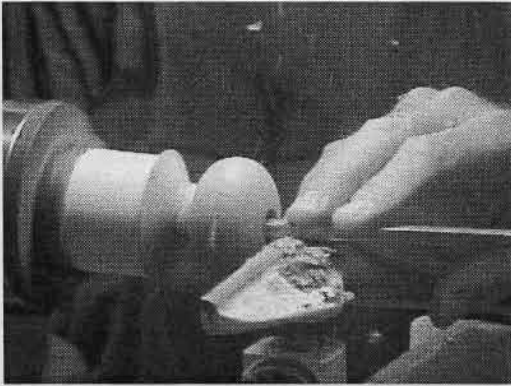
The whole session was worth much more than the \$30 per member and most enjoyable. Bob was very entertaining during his presentation. He did not waste any time. He got a standing ovation from the class at the end.

Tom Raymond, Sec..



Bob demonstrating on his portable Oneway lathe.

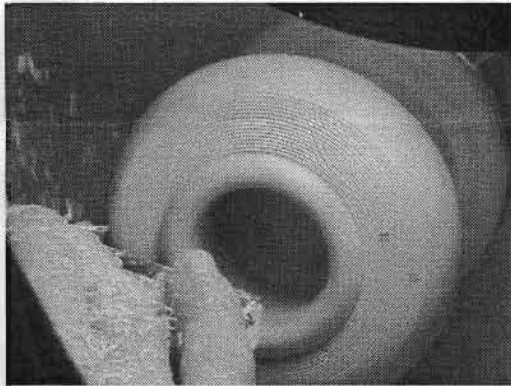
Bob Rosand Demo Photos



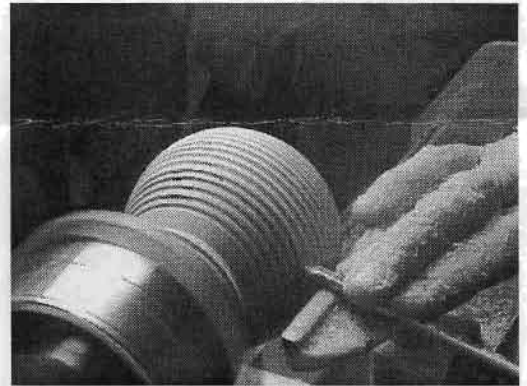
Hollowing out Christmas ornament



Beginning to shape ornament icicle



Shaping top of confetti lamp



Cutting grooves on lidded box

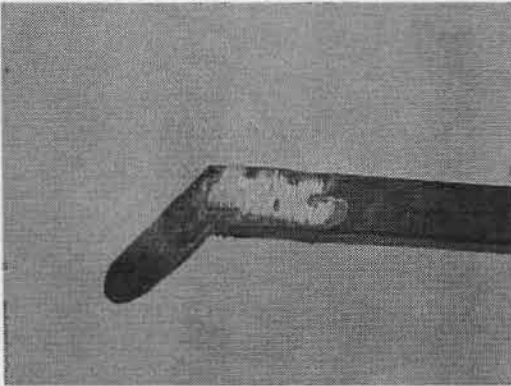


High tech system for clearing inside shavings!!!

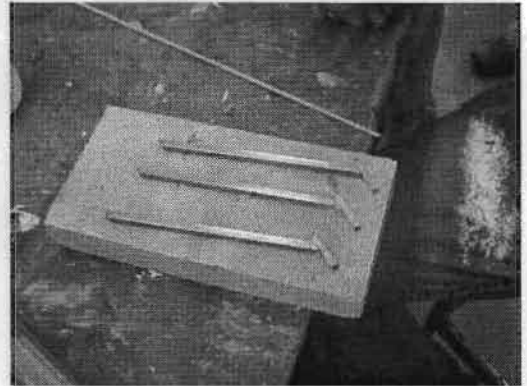


Shaping finial for birdhouse

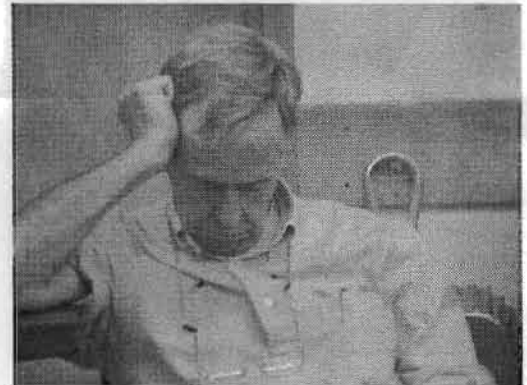
Bob Rosand Demo Photos, continued.



Bent angle tool for hollowing vessels



Homemade bent angle tools waiting to be silver soldered.

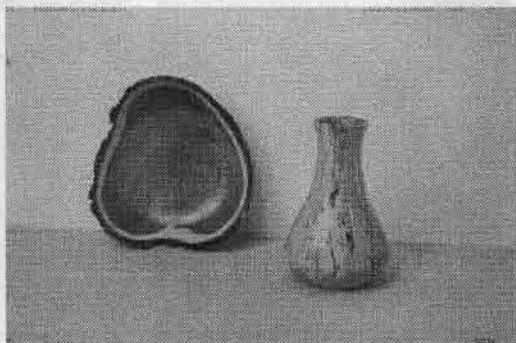


The post lunch demo was obviously a little more than some of our members could handle. I really do wonder what Subway puts in those subs. Just think if one of these guys was responsible for handling our club's funds!!!!!!!

woodworkers warehouse
Serious Tools For Serious Woodworkers™

Clayton Matthews, manager at the Augusta WWW donated almost \$50.00 worth of sandpaper towards club raffles. Please visit the Augusta Woodworker's Warehouse, thank them for their donation and please mention you saw their ad in the Maineiac Woodturner Newsletter.

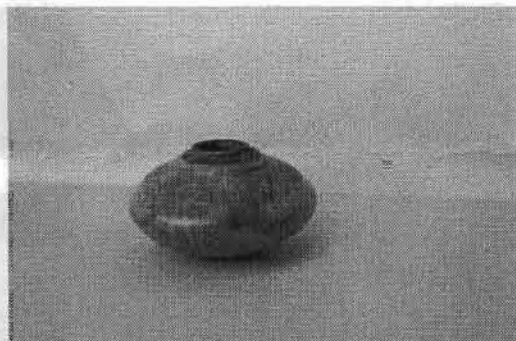
Show And Tell, September, 2002



Turned Bowl and Vessel,
Carl Powe



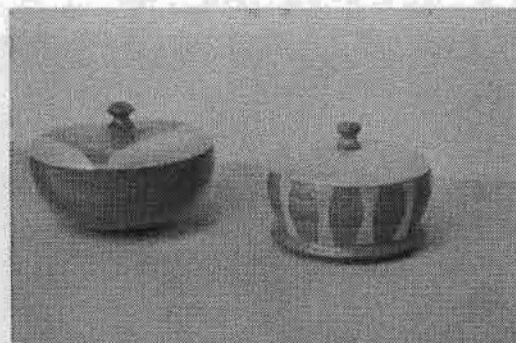
Cherry Bowls, Mark Irving



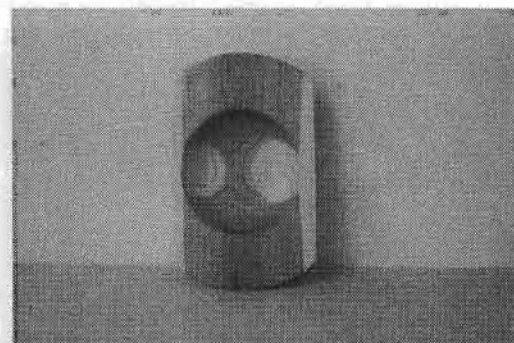
Turned Vessel, Artist Unknown



Maple Bowls, Mac Ray

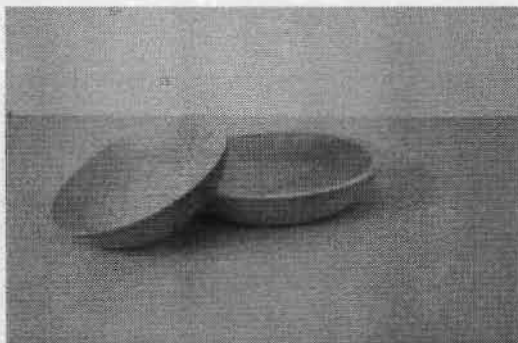


Segmented Bowls, Tom Raymond

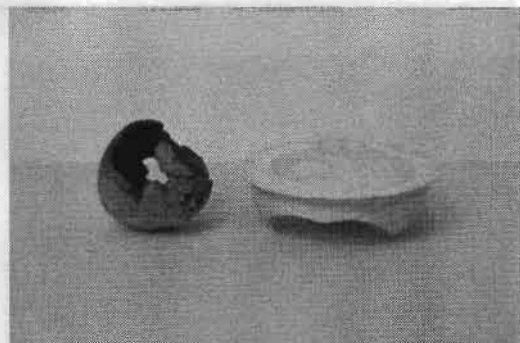


Cherry Bowl with Wings, Mark Irving

Show And Tell, Continued



Maple Bowls, Kieran Kammerer



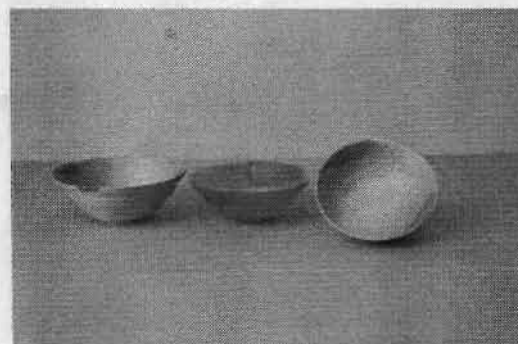
"All Heart" and Footed Bowl,
Peter Asselyn



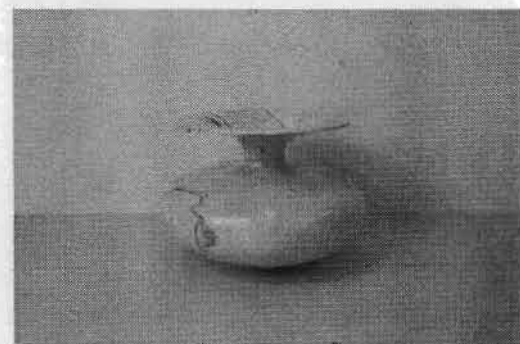
Bowl, Mark Irving



Turned, Carved and Gold Leafed Vessel,
Jacques Vesery



Birch Bowls, Kieran Kammerer



Spalted Maple Vessel, Ken Keoughan