

Maineiac Woodturner

Monthly Newsletter of the Maine Chapter of the AAW
Volume 1, Number 5, February, 2001

Vice-President's Message

Thanks to all who brought in wood for the wood auction in January and I hope we have a good selection for the February meeting. February's meeting will be a hands on tool making session, so bring in tools you have made or tools you would like to know how to better use. There were some beautiful works on the show and tell table in January and we are looking forward to this month to see what new things members are working on. Keep turning safe.

Peter Asselyn

In this Issue

Vice-President's Message	Page 1
Club Business	Page 2
Classifieds	Page 8
Turning Tip	Pages 6
Turning Demo	Pages 3 & 4
Member Profile	Pages 7 & 8
Member News	Pages 2 & 8
Meeting Schedule	Page 6
Wood Auction	Page 5
Turner's Quiz	Page 6
Show and Tell	Pages 9 & 10
Wood News	Page 5

Club Officers

President Bob Hackett
633-6232

Vice-Pres. Peter Asselyn
353-4206
asselyn@banet.net

Newsletter Kieran Kammerer
622-1946
shkrtrds@ctel.net

Librarian Mark Irving
443-2337
irvings@javanet.com

Treasure Robert Morell
725-2212

Auctioneer Peter Asselyn

Club Business, January, 2001

Meeting was called to order by President, Bob Hackett. Bob wanted everyone to continue thinking about demonstrators for the upcoming year and next year. Bob also mentioned that Bob Rosand is still possibly a demonstrator for later this Spring. More information should be forthcoming as it becomes available.

Bob also mentioned that the 2002 Woodturning Symposium will be held in Providence Rhode Island. The South Shore Woodturners from the Boston area will be doing a lot of work in preparing for the symposium. Demonstration assistants will be needed and Bob mentioned that this is a perfect way to not only volunteer, but to also get one of the best seats in the house for the actual demonstration. Those interested should probably contact the AAW home office for details. Bob also wanted club members to think about going to the RI Symposium as a group. We may be able to get savings on room rates and transportation.

On the subject of demonstrations, a poll of those who are planning to attend the AAW Symposium in St. Paul, Minnesota was taken. Of the members present, only Jack Vesery and Steve Gleasner will be attending. Jack did mention to members that in the Summer/Fall American Woodturner magazine, there should be applications for the AAW scholarships. Members can receive up to \$1000 that can be applied to such things as attending an annual symposium. Although it will be too late for this year's symposium, it would be perfect timing for the Rhode Island symposium.

Mike Chase also brought in pictures of the recent vacuum/dust collection system he installed in his shop. Mike's design allows for quite an array of hookups and is extremely versatile in design. I have spoken to Mike and he is willing for me to visit his shop some time and photograph the setup. If possible, I plan on having this as a feature in a future newsletter.

Alan Bradstreet mentioned to the group a source for replacement dust collector bags. Alan has found the bags to be not only very affordable but also much more efficient than the stock bags. The bags can be purchased from **World Wide Filtration** at 1-800-299-2247 or visit them at www.worldwidefiltration.com.

The group also welcome a new member Ted Curtis who is from the Yarmouth area. Ted reports that he comes from a family of woodworkers and now that several children are finally out of school, he is looking to develop some new interests. I think I speak for the club in welcoming Ted and encouraging him to share any talents he may have with the group.

Kieran

Finance News

All current club members seem to be in good standing with respect to dues. The current account balance is \$2064. Bob Hackett feels that from a financial standpoint, the club is continuing to do well. Our financial stability is due in part to club member's continued participation in both the wood auctions and bring back raffles. Member's continued support is encouraged and greatly appreciated.

Member News

Steve Gleasner shared with us the recent good news regarding the acceptance of several of his pieces into the del Mano Gallery located in California. The gallery is known for selling "museum quality" pieces and for promoting woodturning as an art. Congratulations Steve.

Those interested in looking at work from the gallery can view it at, www.delmano.com.

Demonstration, January, 2001

Those in attendance at January's meeting were treated to an inspiring and informative demonstration on natural edge bowl turning by our own Peter Asselyn. Peter was obviously pumped up for the demonstration and didn't let us down.

The first part of the demonstration focused on setting up your lathe and properly securing your bowl blank. In order to adequately light his work space/lathe area, Peter has designed a light fixture which incorporates a halogen light attached to a wooden arm. This arm swivels off an attachment at the back of the lathe and can be positioned horizontally to light either side of the work piece. Peter's only refinement in making a new arm, would be to allow the light to be adjusted up and down in the vertical plane (see picture below).



Light Bar on Lathe

Anyone who knows Peter and his work, knows Peter usually likes to work with big pieces. In order to safely secure his pieces, Peter often times will use a modified Oneway spur center. Peter has removed the short center point supplied with the spur center and has replaced this with a drill bit of equal diameter. The drill bit is allowed to stick out about 1/2" or so. This bit will eventually fit in an equal sized hole drilled in the piece to be mounted.

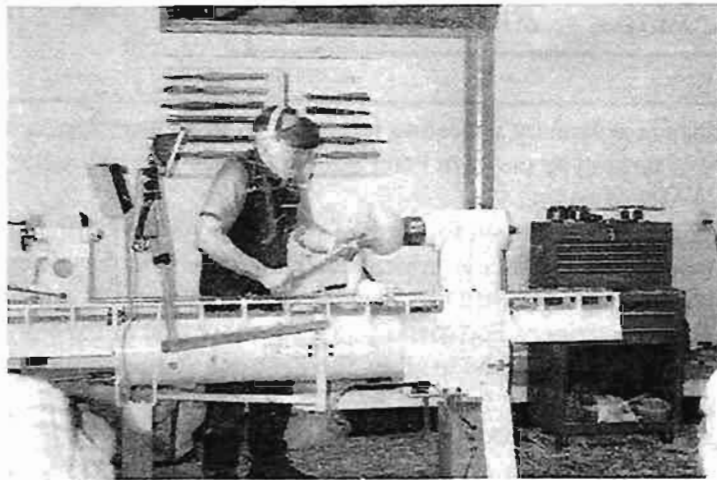
Once the piece is placed on the spur center with the modified center point, Peter brings up the tail stock. By using his thumb on the tool rest as a guide, Peter can center the work piece and further refine the exact position of the tailstock. The piece is then rotated by hand and the tailstock is sequentially tightened to allow the teeth of the spur drive to bite deeper into the work piece. Peter always has worn face protection and recommends frequent checking and retightening of the tailstock as your work progresses.

Once the piece was securely tightened, Peter let the chips begin to fly. As would be expected, Peter first works to remove the corners from the piece. In order to keep the tool from jumping around a lot, Peter keeps it securely held against his body. Once the initial shape is obtained, Peter will rub the bevel and attempt to get as smooth and as fine a cut as possible. Peter uses a tool grind similar to the Ellsworth grind, however, he feels the angle of the bevel is steeper than the Ellsworth grind and is around 65 degrees. In shaping the outside, Peter tries to leave the bark on the piece. Once the outside is completed, a tenon is turned on the bottom of the bowl with a parting tool and the piece is rechucked in a four jaw chuck. The inside of the bowl is the rough turned. With the piece rough turned wet, it is now ready to be placed in Peter's own concoction of dishwashing soap and water. Peter uses a mixture of approximately two-three quarts of dishwashing soap to seven gallons of water. From personal experience, Peter suggests using a strong container to hold the liquid and keep it covered.

Once pieces are placed in to the dishsoap/H₂O combination, they will initially float. When items no longer float (usually takes about 2-3 days), remove from the mixture and set out to dry. Peter feels most items when first taken out almost double in weight. Most pieces will then dry in about three-four weeks. The H₂O/soap combo not only speeds drying time but also seems to help lubricate the tool on the final, finishing cuts and improve the surface finish.

(Continued on page 4)

January, 2001 Demo, continued.



Peter turning inside of natural edge bowl.

When Peter is ready to finish turn his bowls, he first will remount the bowl using a combination of one of his homemade jam chucks along with the tailstock. The tenon on the bowl is trued up with a parting tool, the bowl is rechucked in a four jaw chuck and the outside is finish turned.

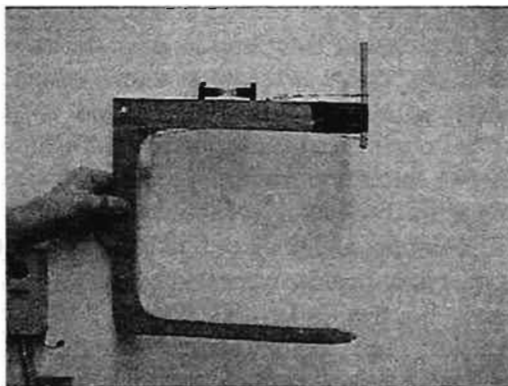
After trying several different finishes, Peter prefers to use a combination of mineral oil and Watco oil mixed 1:1 on his pieces. The wood will receive a generous coat applied with a brush, allowed to soak in for a period of time and then Peter begins sanding. The initial grit chosen will depend on the off the tool finish, however, Peter has no problems starting with 80 grit and progressing in stages through 80-120-150-180-220-320-400. Following sanding with 320 and 400, Peter will also burnish the piece with wood shavings. The 400 grit sanding is also followed by running a tack cloth over the piece. Peter will also at times burnish with a piece of leather. As anybody who has felt one of Peter's pieces can attest to, this system works and produces pieces with beautiful, smooth surfaces.

Peter uses Lee Valley as a source for his 120/220 and 400 grit sandpaper. The other grit papers are from Klingspaur.

Once the outside is finish turned, the bowl's inside will then be completed and the piece is ready for the gallery of Peter's choice.



Peter and his homemade, laser depth gauge



Close-up of laser depth gauge

Meeting Schedule

- **February 21, 2001**

This meeting will focus on making tools and scrapers. Bob Hackett will be demonstrating brazing techniques and other methods of construction. Unfortunately due to his recent accident, Rene Pomerleau will be unable to share his knowledge of tool making. Further details at the meeting.

- **March, 2001**

Jacques Vesery has agreed to do a day long Saturday workshop. The workshop will take place at Erskine and the final details (date, time, etc.) are still being worked out.

- **April 18th, 2001**
Jeff Clapp - TBA

- **May 16th, 2001**
Steve Gleasner - Sphere Turning



Wood Auction

Under Peter's expert auctioneering skills, last month's wood auction was a great success. Lots of club members went home with beautiful pieces of wood which should show up in future show and tells as even more beautiful turned pieces. The club was able to raise a total of \$104.00 from last months raffle. As always, members are encouraged to bring wood each month for raffles.

Wood News

Peter Asselyn received a recent memo from Cindy Helmlinger, show manager for the American Woodworker Show. There will be a show in Portland, ME at the Portland Maine Exhibition Building from October 12th-14th., 2001. The show will feature nationally known woodworkers such as Frank Klausz, George Vondriska and Carol Reed. If anyone is interested in possibly volunteering at the show, please call Cindy Helmlinger at 1-800-394-5157, ext. 46.

Turning Tip

Keeping tools handy at the lathe.

TIP: Make yourself a "tool pad" for your lathe bed to create a convenient place to keep your tools right at hand. Visit your local flea market and purchase a small carpet sample. Cut a piece of 1/4" plywood and attach a 3/4" square "rail" on three sides sized to fit the carpet. Mount a square block of wood; (mine is 1 1/2" sq.) about 10" long; that will drop easily into the gap on your lathe bed on the bottom using a carriage bolt so it will rotate. Glue the carpet on the plywood and you are set to go. The carpet provides a soft place to lay your tools and absorbs vibration so they don't bounce around. The piece underneath keeps it securely on the lathe and makes it's position adjustable to suit you. I use mine for turning tools, calipers, sanding stuff, and whatever I need for the job at hand. Just set it aside when not in use. Bruce Hoover (Tidewater Turners)

Are you a compulsive woodturner?

- 1) When viewing a storm ravaged landscape, do you see wood at bargain prices?
- 2) Does the sound of a chainsaw immediately attract your attention?
- 3) Do you think "As the World Turns" is a sequel to "The New Yankee Workshop"?
- 4) Do you turn wood, just to see the shavings fly?
- 5) Are you always looking for more turning tools?
- 6) Does your spouse have to call you in from the workshop to go to bed?
- 7) Do you find your need for woodturning ever increasing?
- 8) Do you always say YES when others ask you to turn something for them?
- 9) Do you day dream about how to do a new turning project?
- 10) Have you made attempts to increase your time at the lathe?

* If you have answered YES to several of these questions, you may just be an abuser.

* If you have answered YES to most of these questions, it may be too late!

* If you answered YES to ALL of the questions and can come up with several more....

BUY A NEW LATHE AND ENJOY !!

The Woodturner's Test (By Mike Barker) Tidewater Turners of Virginia

Member Profile

As a new feature for this month's newsletter, I have decided to profile one of our club members so we can all learn more about individual's interest not only in woodturning but also in other aspects of life in general. Some may view this as filler while others may view it as a means to get to know club members better. As editor, I view it as both. I hope members will enjoy this new addition and I will be looking for other members willing to have me drop by their shops for a brief interview and photo shoot.

Thanks,
Kieran

February, 2001 Member Profile

Peter Asselyn was kind enough to be the first club member to share his shop and views on woodturning. Peter currently lives in Durham with his wife Sandra and has three grown children who still play an important and active part in his life. While Peter is busy turning, his wife enjoys sewing and is an accomplished seamstress and quilt maker.

Prior to his current interest in woodturning, Peter was previously a licensed pilot and has even built his own plane (the sale of which I think funded his transition to turning). Peter also has interests in motorcycles and photography.



Peter at home with new hollowing bar!!!

Lathe: Oneway 2436

Favorite Tool: Recently purchased Lyle Jameison Hollowing System

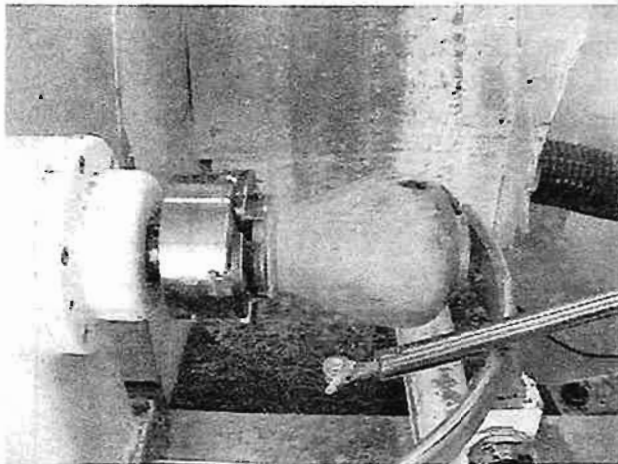
Favorite Wood: Cherry Burl

Favorite Piece: Changes with time. Every new piece is Peter's favorite one. Recent hollowing tool has allowed him to make a piece he has wanted to create for quite some time.

Turning Goals: Get in a few more galleries. Always get most beautiful piece from each turning.

Turning Tip: No matter how you sharpen your gouges, each tool has a sweet spot and you need to find that sweet spot for each tool!

Member Profile, continued



Peter's Piece on Day of Visit



Peter's Bowl Drying Area

Classifieds

Wanted: Cherry burls. Usually the bigger the better. Please contact Peter Asselyn at next meeting or call, 353-4206.

Your ad here. FREE!!!!
Please contact the editor for details.

Member News

Just prior to the newsletter going to print, I learned of Rene Pomerleau's accident in which he accidentally amputated two of his fingers. I am sure I speak for all the club members in wishing Rene a speedy recovery. He can be reached at 622-0276 and cards can be sent to RFD 5, Box 1710, Augusta, ME 04330

Editor's Note

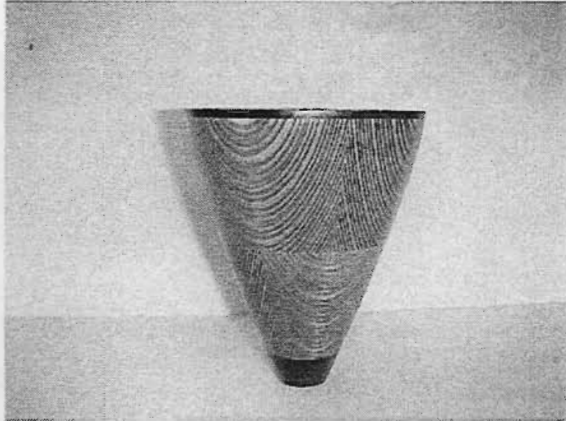
I am writing to reach out for help with the newsletter. When I assumed the responsibility as editor, I was under the impression that other members would be at times, willing to contribute tips, brief articles, etc. to the newsletter. Although I have received some info, I could use a lot more. Unfortunately as the demands of my other job have increased, I have been left with less time for the newsletter. If club members want to see the newsletter continue in its current format, any help would be greatly appreciated. Please let me know.

The only other thing I would request help with would be a sign in log for pieces brought to show and tell. I am afraid I may not be giving the right people credit for their pieces. The log could include your name and a brief description of your piece(s).

Thanks,

Kieran
 shktrds@ctel.net

Show and Tell, January, 2001



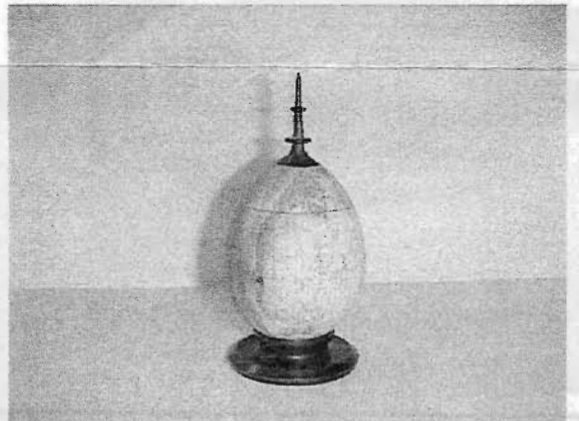
Steve Gleasner's future del Mano piece.



Segmented Turning by Tom Raymond.



Bob Hackett's first bowl.



Turned Box with Stand, Mac Ray



Turned Burl Vessel, Mac Ray

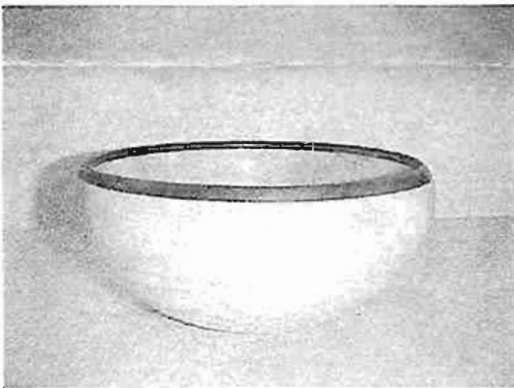
Show and Tell, January, 2001, Cont.



Turned Earrings, Peter Asselyn



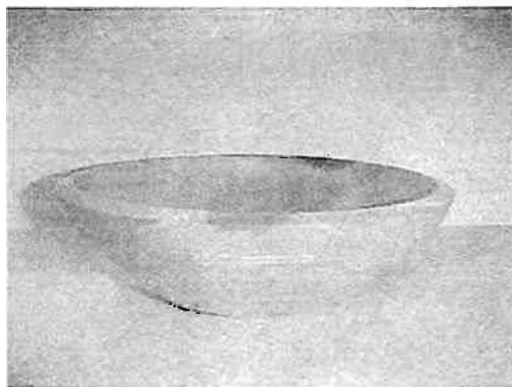
Cherry Bowl, Mark Irving



Spalted Maple Bowl with Walnut Rim, Mac Ray



Turned Platter, Burt Truman



Cherry Bowl, Mark Irving