

# Mainiac Woodturner

Monthly Newsletter of the Maine Chapter of the AAW  
Volume 1, Number 1, October 2000

## President's Message

Greetings from your newly elected vice-president. Due to a breakdown in communication and Bob Hackett's absence at a military commitment, we had a short meeting in September with approximately eight members present. During that meeting, I was nominated and elected to be the next vice president of the Maine Chapter of the AAW. I was assured by the members present that there we be no opposition to my election.

I know I speak for Bob and myself when I say we are looking forward to a year when we can all continue to share our joint knowledge and improve our skills as woodturners. I will be looking for suggestions, comments, etc. from members as to how we all feel we can grow individually as turners and together as a club.

I look forward to hearing from you at the next meeting. I would like to propose that we think about including spouses/significant others at the December meeting and think about some sort of gift swap for our spouses/significant others. Please think about it and let me know.

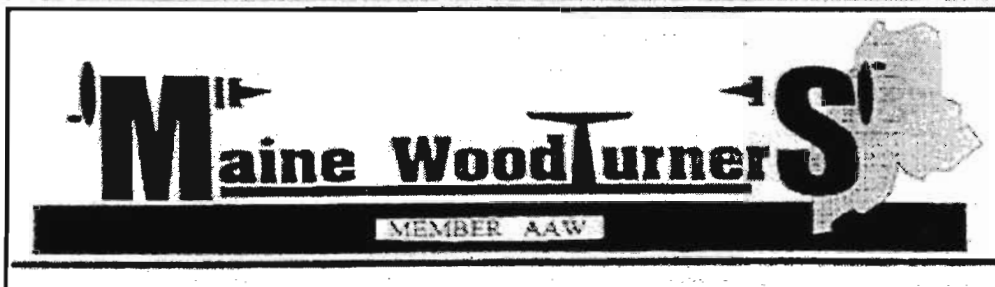
Peter Asselyn

## In This Issue

President's Message	Page 1
In Memoriam	Page 2
Editors Note	Page 2
Classifieds	Page 5
Bring Back Raffle	Page 2
Membership Info	Page 2
Show and Tell	Page 6
Library News	Page 2
Tip of the Month	Page 3
Meeting Schedule	Page 5
Club Officers	Page 1
He's a Burl Watcher	Page 4
Wood Auction	Page 5

## Club Officers

<b>President</b>	Bob Hackett 633-6232	<b>Librarian</b>	Mark Irving 443-2337 meivin@biw.com
<b>Vice-Pres.</b>	Peter Asselyn 353-4206 asselyn@banet.net	<b>Treasure</b>	Robert Morell 725-2212
<b>Newsletter</b>	Kieran Kammerer 622-1946 shkrtrds@ctel.net	<b>Auctioneer</b>	TBA



## In Memoriam

Club members at the September meeting were saddened to learn from Charlie Rogers of the death of Joe Larrabee on August 5, 2000.

Joe was born in Bath, ME, and for 36 years prior to his retirement, he worked as a research chemist at Phillips Labs at Hanscom Field in Bedford.

According to David Lancaster, Joe was one of the original members of the club. He would travel from his home in Chelmsford, MA and stay with Charlie so he could attend the meetings.

Through a generous donation from Joe's ex-wife, Joe's presence in the club will continue to be felt. The club received Joe's collection of woodturning videos and books to be added to our library.

I am sure I speak for the whole club in thanking Joe's family for their generosity. He will be missed as a member of the club.

## Editors Note

Having never worked as an editor and always leaning away from english classes, I sit here wondering why I agreed to take on this job.

When I didn't receive a newsletter last month, I missed hearing about the club, what people had been up to over the summer and what the coming year was going to hold for the club and its members. I feel the club has given me a lot of great information and inspiration over the last two years and I felt it was my time to give something back. I surely can't give much in the way of woodturning expertise so I figured I could contribute in a different fashion.

As the editor for the newsletter, I will try to make it both valuable and informative. I think it can serve as a way of sharing our ideas and making us all better turners.

I hope nobody minds me taking the liberty of changing the newsletter format. I would really appreciate any and all comments/criticisms. Please consider this to be a work in progress.

I can be contacted by phone, 622-1946 or through email at [shkrtrds@ctel.net](mailto:shkrtrds@ctel.net). The sooner I have your information, the sooner the newsletter can be completed and mailed out.

Thanks in advance for your help and cooperation.

Kieran Kammerer

## Library News

Mark Irving has agreed to take on the role of club librarian for the upcoming year. During last year, Mark worked to try to streamline the check-in/check-out process for taking out books or videos. If you have any outstanding books/videos, please make sure to bring them to the next meeting. Please also remember to pay Bob Morell the rental fee when checking out tapes.

## Bring Back Raffle

Hopefully somebody else remembers who the last winner of the bring back raffle was. Remember that the last winner is on the hook for bringing back the next month's raffle item. In this month's newsletter, you will see an item entitled tip of the month, I would like to propose that who ever contributes the tip for the month, receive several free bring back raffle tickets. This may help encourage other members to contribute their ideas and lessen my search on the net for woodturning ideas. Please let me know what you think.

## Membership Information

Time to pay up for this years dues. Bob Morell should be collecting dues at the October meeting. As was the case last year, non-paying members will be sent several complimentary newsletters. The well will eventually run dry and your newsletters will stop.

This is also a good time to promote membership in the AAW. For only thirty-five dollars a year, you receive membership in the national association and a year's subscription to American Woodturner. Trust me, this is the closest thing to a free lunch any of us will ever see.

Please seriously consider joining the AAW. Your membership not only benefits yourself but our Maine chapter as well.

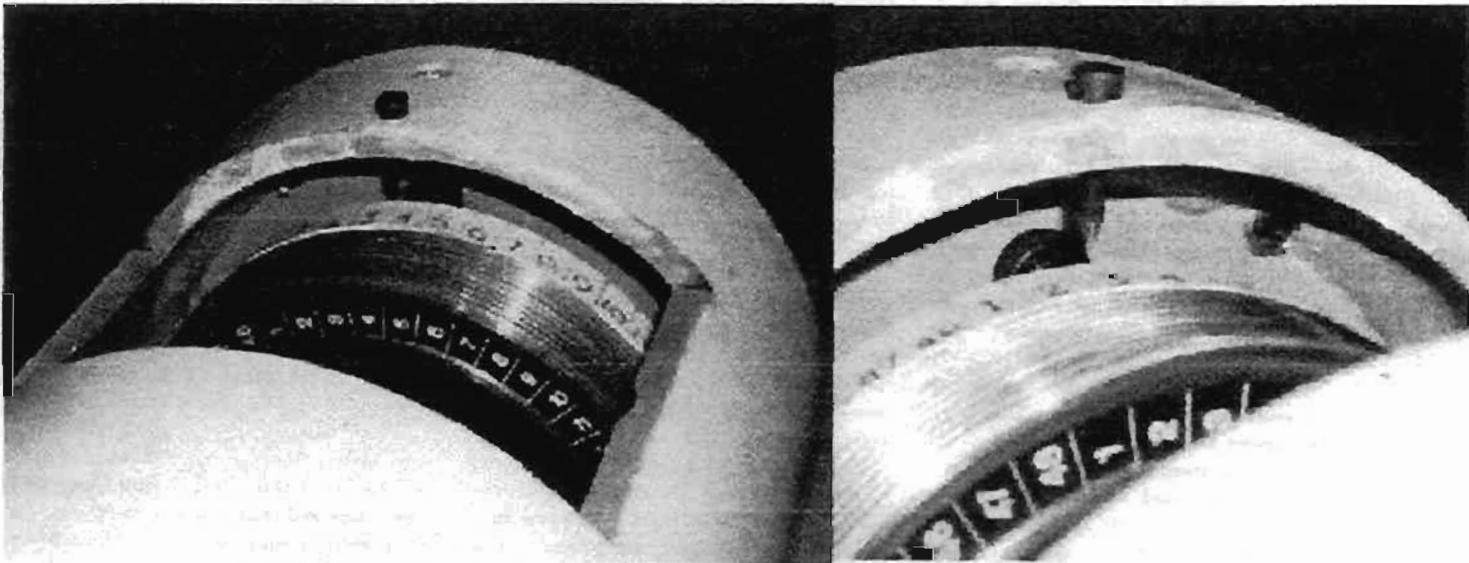
## Tip of the Month

This month's tip was contributed by our own Mac Ray and presented to members at the September meeting. Although specific to the Oneway lathe (which we all will eventually own if David has his way), some of you may find a way to adapt it to your own lathe.

Mac designed a way to modify the indexing system for the Oneway 2436 lathe. Mac found the indexing system as designed to be well made, however, he felt a piece of masking tape being used as a reference point, didn't meet his needs. In Mac's design, he took a set screw that he uses in making his cutting tools and ground a point on one end. He then drilled and tapped a matching size hole in the head casing, in line with the set screw for the index pin. Mac then took the paint supplied with the lathe as touch-up and painted the outboard end of the pulley with three or four coats of paint. He advises to work fast as the paint is lacquer based and dries fast. Mac also advise that prior to painting, you consider masking off the rest of the pulley. When the paint is dry, use a small square or piece of cardboard to transfer the indexing lines to the painted surface. Mac found using a permanent marker worked well for the lines and numbers. (See photos below).

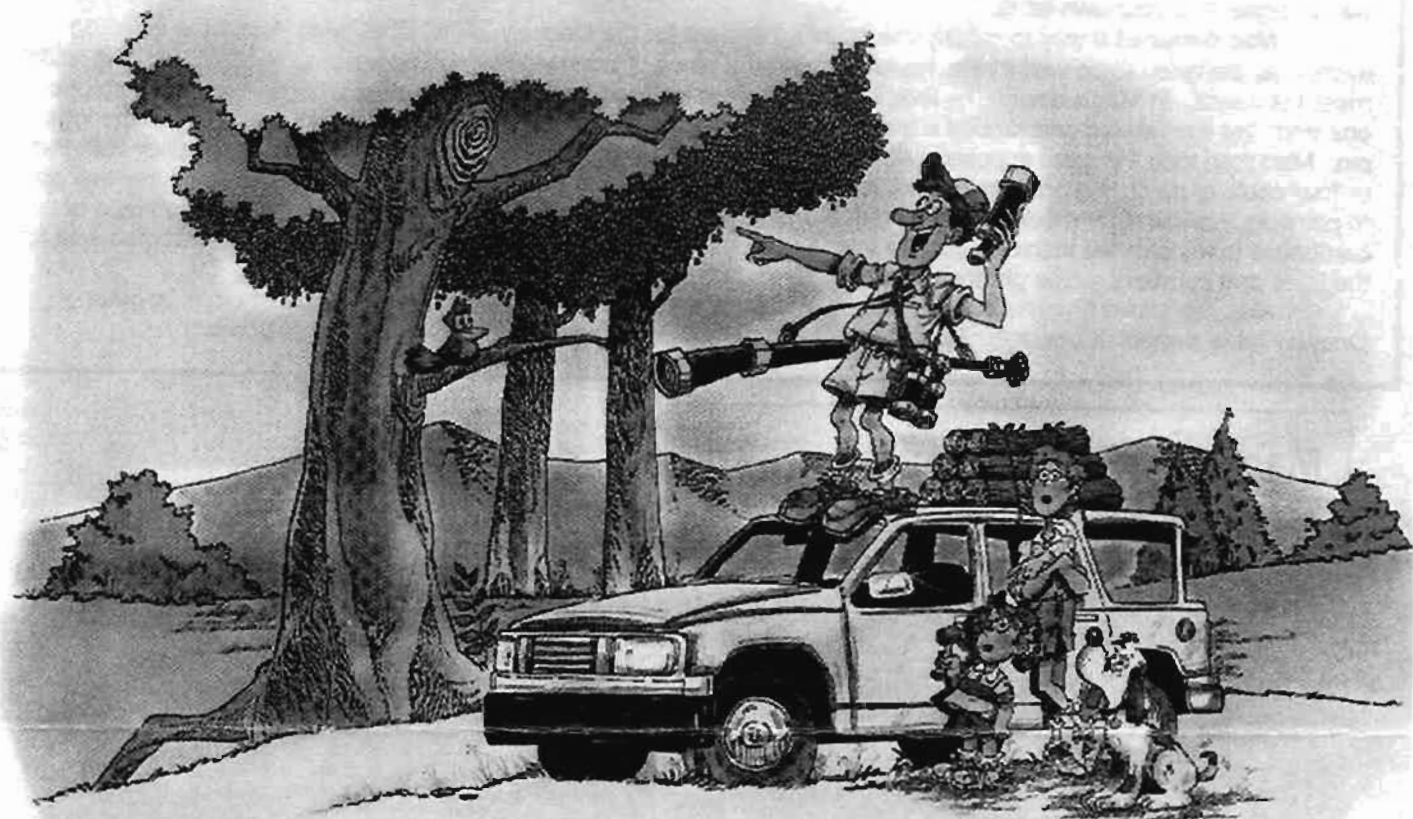
Mac has found that this system has worked quite well for his work and hopes it may be helpful to other Oneway lathe owners in the club. For us other unfortunate lathe owners, we can only hope and dream.

### Mac's Modified Indexing System



## He's a Burl Watcher

by Celeste Perrino Walker



**M**y husband went to a woodturners meeting one day and never came back. Oh sure—they sent someone who *looked* like him, but they couldn't fool me. It wasn't the man I married. Not the man who didn't know a turning tool from a spatula. Not the man who thought all salad bowls were made in Taiwan. Not the man who innocently suggested one day, "Hey, honey, what do you think about getting a lathe?"

"What's a lathe?" And why do we want one, I thought but didn't add.

He spent the first year bolting it to the floor, hanging sandbags from it, and turning it on and off to admire the remarkable sound that I could hear clearly outside and two blocks down. For our anniversary I gave him turning tools. He gave me earplugs.

I should've caught on, the first day he started turning bowls. The man who

wouldn't run from a fire flew up the stairs from the cellar where his "workshop" was. With all the sawdust sticking to his safety goggles and clinging to his clothes, he looked more like a monster from a toothpick factory than my husband.

I "oohed" and "aahed" appropriately, even though these first bowls were crude, squat things the dog wouldn't eat out of. That was all the encouragement he needed. Soon, his side of the garage started filling up with things like "spalt" and "bird's eye" and "crotch flame."

Then I started to overhear snatches of conversation with other woodturners. "What a beautiful burl," I heard him whisper lovingly over the phone. "The chance of a lifetime. Cal sure is a lucky guy. Wonder where I could find one."

I would wake up with the sun barely peeking over the mountaintops, but

when I reached for him, only a cold sheet greeted my outstretched fingers. Gone again.

The early morning and late evening trips became more and more frequent. He tried to tell me that he was "just driving around," but I knew. He was burl watching.

Now he lives from one woodturners meeting to the next, feverishly gathering wood to fill our already loaded garage, and turning a cellarful of wood shavings. I feel like the wife of a beaver.

When our son grows up, I will warn him about these things. "Wood," I will tell him, "is a necessity. But there is a limit. Beyond that is wood addiction. So for goodness' sake, be careful—and don't get carried away with the burls." ▲

**CELESTE PERRINO WALKER**  
is a freelance writer in Vermont.

## Meeting Schedule

Remember that unless otherwise noted, meetings will be held the third Wednesday of the month at Erskine Academy beginning at 7:00 P.M.

### Upcoming Meetings

- **October 18th, 2000**

This meeting will feature our own David Lancaster. David has kindly agreed to start the season off with a lecture/demonstration on tuning up your lathe. This will focus on such aspects as ridding your lathe of vibration. David assures us that everyone will learn something from this presentation and considers it is a must for all lathe owners (even if those who do not own Oneways).

- **November 15th, 2000**

Mac Ray who is well known for his beautifully detailed carvings will be sharing his knowledge and techniques on subjects ranging from turning/carving to finishing. Please plan to attend and bring your questions/ideas.

- **December 20th, 2000**

Peter Asselyn has proposed that we continue the traditional December meeting with a slight twist. This meeting would allow our spouses/significant others to come and see what we do on those every third Wednesdays. Peter has proposed that we plan on a gift swap where wives/significant other are the recipients of the gifts. Peter would also like to plan some type of a potluck meal at that meeting. Remember, it is never too early to plan.

## Classifieds

**For Sale: Woodfast M1910**  
20x39, one and a half horse power, variable speed. Two years old. Includes new center and steady rest. Asking \$2600. Please contact Peter Asselyn

## Wood Auction

We will be planning on having a wood auction at the October meeting. This is a great time to get some unusual pieces of wood at bargain prices. Please come prepared with money in hand. Any contributions of wood to the auction will be greatly appreciated. We are also looking for someone to fill the position of auctioneer. Please contact Peter or Bob for details.

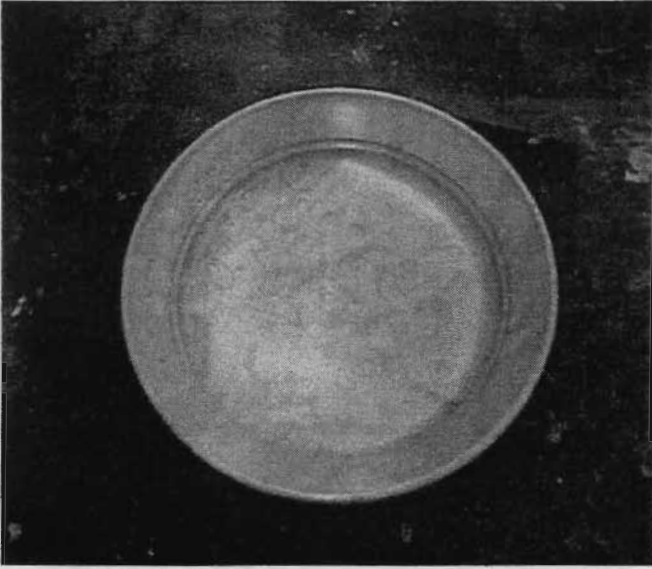
## Additional Thoughts

I have spent a lot of time looking at other club's newsletters and have found clubs doing a lot of various activities. Some clubs have a President's Challenge where the president picks a specific item to turn and members bring in their pieces for review. Other clubs sponsor mentoring programs amongst the members while others have a half an hour or so set aside before the meeting to teach new members some fundamentals. I throw these out for your consideration, thoughts and ideas.

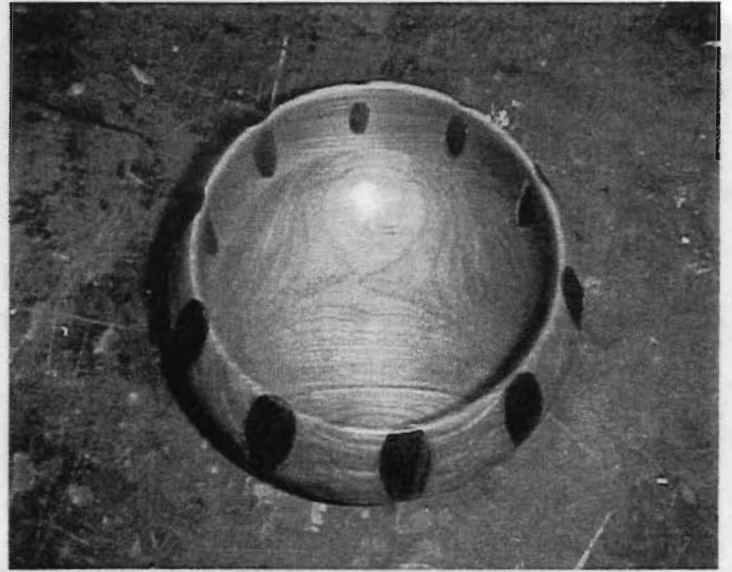
At the last meeting we also discussed photographing the pieces for Show and Tell. Would anybody be willing to construct a small box/booth where the pieces could be photographed? Anything has to be better than the workbench top.

Kieran

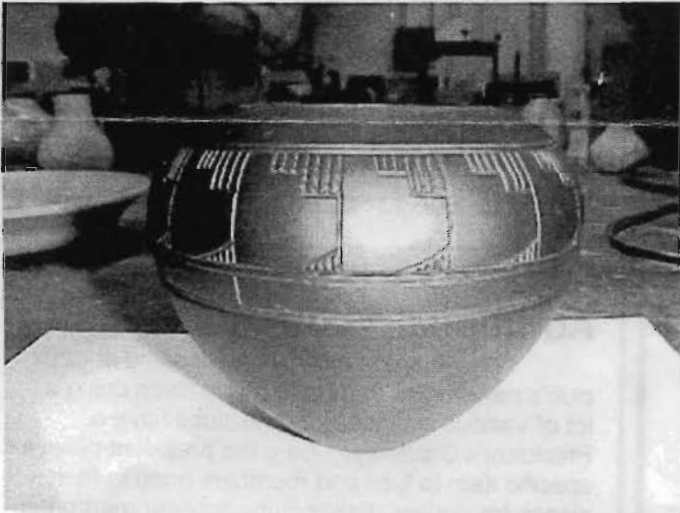
**Show and Tell, September Meeting**



**Bird's Eye Maple Platter, Charlie Rogers**



**Segmented Bowl, Tom Raymond**



**Black Turned Vessel with Hand Carving, Mac Ray**



**Spalted Vessel, Mac Ray**



**Honey Dipper, Peter Asselyn**